

**DOLFIN**<sup>®</sup>

FALL | WINTER  
2023





## FALL | WINTER 2023

Dolfin Swimwear has provided high quality swimwear and equipment to athletes of all levels for over 70 years. With athletes at the forefront of everything we do, we create products with a purpose. Dolfin strives to offer swimwear and accessories that enhance your swim experiences and help you and your team achieve your goals.



@dolfinswimwear



# TABLE OF CONTENTS

---

|           |                     |
|-----------|---------------------|
| <b>6</b>  | DOLFIN FIRSTSTRIKE® |
| <b>10</b> | RELIANCE®           |
| <b>16</b> | XTRASLEEK™          |
| <b>22</b> | SUBLIMATION         |
| <b>32</b> | TEAM GEAR           |
| <b>36</b> | DOLFIN BASICS       |
| <b>42</b> | GUARD               |
| <b>48</b> | UGLIES®             |
| <b>58</b> | LITTLE DOLFIN™      |
| <b>64</b> | AQUASHAPE®          |
| <b>82</b> | ACCESSORIES         |



# DOLFIN **FIRSTSTRIKE**<sup>®</sup>

## FOUNDATION TECHNICAL RACEWEAR

71% MICRO NYLON / 29% SPANDEX

## APPROVED FOR ALL AGES

FirstStrike is FINA approved and USA Swimming approved for all ages, making it a great choice for any swimmer, especially those 12 and under.

Providing zoned muscle control and energy return, swimmers are competition ready in this lightweight racing suit.



UV PROTECTION



CHLORINE  
RESISTANT



PILLING  
RESISTANT



MUSCLE  
CONTROL



LOW PROFILE



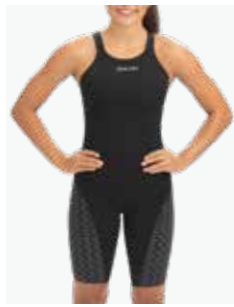
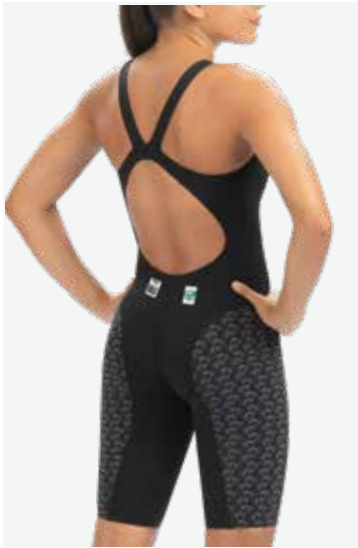
WATER  
REPELLENT



QUICK DRY







790D BLACK



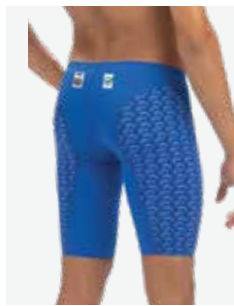
475D ROYAL

---

## OPEN BACK KNEE SUIT

Style No.  
**0A30**  
**SLD**

**FEATURES:** FINA approved, for all ages, UPF 50+.  
**FABRIC:** 71% Micro Nylon, 29% Spandex  
**SIZES:** 18-34



475D ROYAL



790D BLACK

---

## JAMMER

Style No.  
**8530**  
**SLD**

**FEATURES:** FINA approved, for all ages, UPF 50+.  
**FABRIC:** 71% Micro Nylon, 29% Spandex  
**SIZES:** 18-34





# RELIANCE<sup>®</sup>

## TEAM SUITS

100% POLYESTER

### DURABLE FABRIC

Reliance maintains its steady 2-way stretch, all while withstanding over 300 chlorine hours with its chlorine resistant and pilling resistant fabric.

### COLOR THAT LASTS

Athletes can rely on great colors each wear with Reliance's 100% polyester fabrication.



SHAPE  
RETENTION



PILLING  
RESISTANT



BREATHABLE



UPF 50+



CHLORINE  
RESISTANT

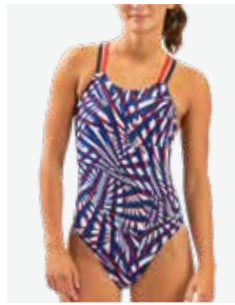


QUICK DRY

*▲ Dolfín offers select prints for two years.  
Orders on these prints must be placed prior to 10/1/23 to guarantee 2024 delivery.*







B41D R/W/B



B58D GREEN



B39D RED



B43D BLUE



B38D BLUE/GREEN

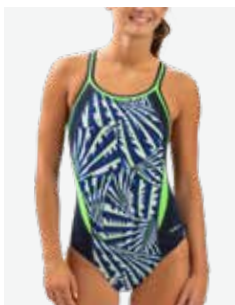
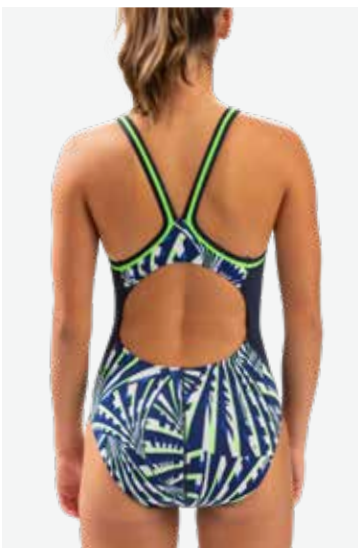
## DOUBLE X BACK

Style No.  
**6A00**

**FEATURES:** All over print, fully lined suit with cheeky bottom coverage. 300+ Chlorine Hours, UPF 50+

**FABRIC:** 100% Polyester

**SIZES:** 22-44



B38D BLUE/GREEN



B58D GREEN



B39D RED



B43D BLUE



B41D R/W/B

## DBX BACK

Style No.  
**5M00**

**FEATURES:** All over print with color block side body, fully lined suit with performance leg cut. 300+ Chlorine Hours, UPF 50+

**FABRIC:** 100% Polyester

**SIZES:** 22-44



B43D BLUE



B58D GREEN



B39D RED



B41D R/W/B



B38D BLUE/GREEN

## JAMMER

Style No.  
**5N00**

**FEATURES:** All over print with color block side panel detail with front panel liner and drawcord. 300+ Chlorine hours, UPF 50+.

**FABRIC:** 100% Polyester

**SIZES:** 22-44



B39D RED



B58D GREEN



B43D BLUE



B41D R/W/B



B38D BLUE/GREEN

## RACER

Style No.  
**5P00**

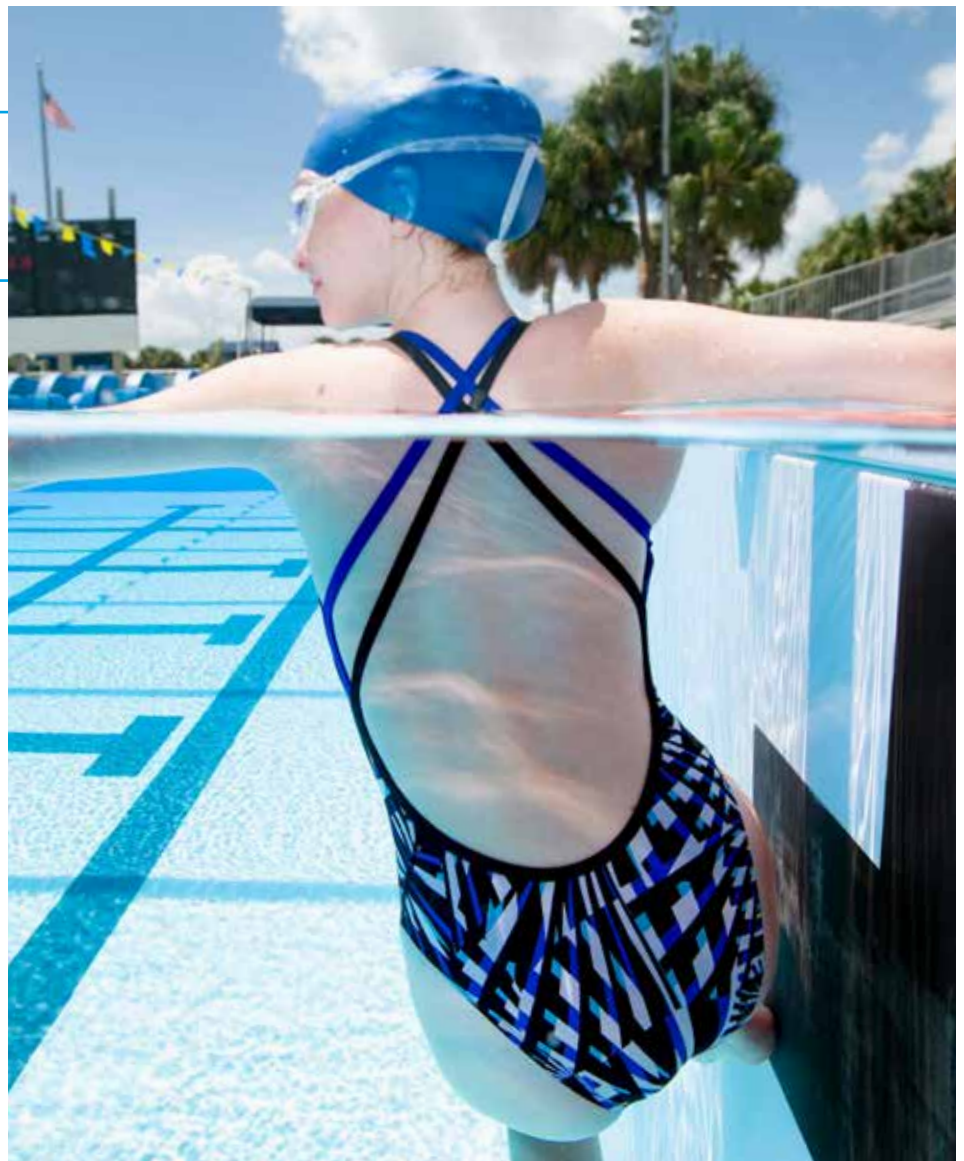
**FEATURES:** All over print with color block side panel detail with fully front lined only and drawcord. 300+ Chlorine hours, UPF 50+.

**FABRIC:** 100% Polyester

**SIZES:** 24-44

## DOUBLE X BACK

B43D | BLUE



Δ Dolfin offers select prints for two years. Orders on these prints must be placed prior to 10/1/23 to guarantee 2024 delivery.



**DBX BACK**

**9582C**

**FEATURES:** All over solid, fully lined suit with performance leg cut. 300+ Chlorine Hours, UPF 50+.

**FABRIC:** 100% Polyester

**COLORS:** 250D Red, 270D Maroon, 290D Purple, 475D Royal, 490D Navy, 585D Forest Green, 790D Black

**SIZES:** 22-40, 42-44 in select colors

**SIZES:** 18-20 available in navy and black only



**V BACK**

**111VB**

**FEATURES:** All over solid, fully lined suit with performance leg cut. 300+ Chlorine Hours, UPF 50+.

**FABRIC:** 100% Polyester

**COLORS:** 250D Red, 475D Royal, 490D Navy, 790D Black

**SIZES:** 22-40



**DOUBLE X BACK**

**6A00SLD**

**FEATURES:** All over solid, fully lined suit with cheeky bottom coverage. 300+ Chlorine Hours, UPF 50+.

**FABRIC:** 100% Polyester

**COLORS:** 250D Red, 475D Royal, 490D Navy, 790D Black

**SIZES:** 22-40



**JAMMER**

**8150C**

**FEATURES:** All over solid, with front panel liner and drawcord. 300+ Chlorine Hours, UPF 50+.

**FABRIC:** 100% Polyester

**COLORS:** 250D Red, 475D Royal, 490D Navy, 790D Black, 270D Maroon, 290D Purple, 585D Forest Green

**SIZES:** 22-40

**SIZES:** 18-20 available in navy and black only



**RACER**

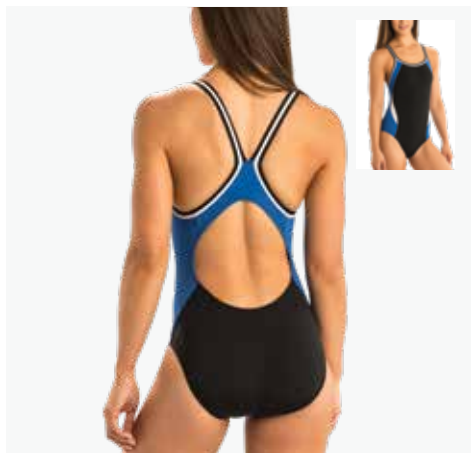
**7150C**

**FEATURES:** All over solid, with front panel liner and drawcord. 300+ Chlorine Hours, UPF 50+.

**FABRIC:** 100% Polyester

**COLORS:** 250D Red, 475D Royal, 490D Navy, 790D Black, 270D Maroon, 290D Purple, 585D Forest Green

**SIZES:** 24-40



**DBX BACK**

**9974C**

**FEATURES:** Color block, fully lined suit with performance leg cut. 300+ Chlorine Hours, UPF 50+.

**FABRIC:** 100% Polyester

**COLORS:** 713D Black/Purple/White, 721D Black/Red/White, 946D Black/Royal/White, 947D Black/Green/White, 957D Navy/Blue/Gold, 958D Navy/Blue/Green

**SIZES:** 22-40



**JAMMER**

**8974C**

**FEATURES:** Color block, with front panel liner and drawcord. 300+ Chlorine Hours, UPF 50+.

**FABRIC:** 100% Polyester

**COLORS:** 713D Black/Purple/White, 721D Black/Red/White, 946D Black/Royal/White, 947D Black/Green/White, 957D Navy/Blue/Gold, 958D Navy/Blue/Green

**SIZES:** 22-40

# XtraSleek™

## TEAM SUITS

78% RECYCLED NYLON / 22% SPANDEX

or

80% NYLON / 20% SPANDEX

## VIBRANCY

XtraSleek fabrication features the sharpest resolution prints with bold and bright intense contrast.

## COMFORT

Built with Recycled Nylon/Spandex fabrication, XtraSleek suits are built to be worn even during the longest competitions while providing ultimate comfort.



SHAPE  
RETENTION



PILLING  
RESISTANT



BREATHABLE



UPF 50+



CHLORINE  
RESISTANT



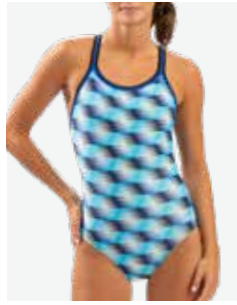
QUICK DRY

▲ Dolfin offers select prints for two years.  
Orders on these prints must be placed prior to 10/1/23 to guarantee 2024 delivery.









B45D BLUE



B56D GREEN



B57D R/W/B



B44D BLUE/GREEN

## DBX BACK

Style No.  
**0231**

**FEATURES:** All over print, fully lined suit with performance leg cut.  
**FABRIC:** 78% Recycled Nylon, 22% Spandex, Eco Friendly Fabric  
**SIZES:** 22-40



B57D R/W/B



B45D BLUE



B56D GREEN

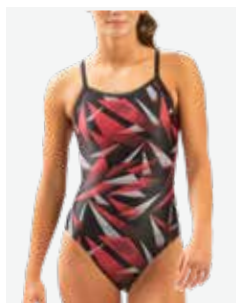
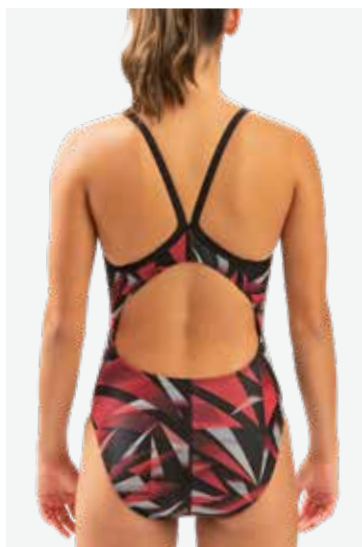


B44D BLUE/GREEN

## JAMMER

Style No.  
**7031**

**FEATURES:** All over print with solid side panel detail with front panel liner and drawcord.  
**FABRIC:** 78% Recycled Nylon, 22% Spandex, Eco Friendly Fabric  
**SIZES:** 22-40



A35D RED



A32D BLUE



A33D GREEN



A34D PURPLE

## V BACK

Style No.  
**0531**

**FEATURES:** All over print, fully lined suit with performance leg cut.  
**FABRIC:** 78% Recycled Nylon, 22% Spandex, Eco Friendly Fabric  
**SIZES:** 22-40



A34D PURPLE



A32D BLUE



A33D GREEN



A35D RED

## JAMMER

Style No.  
**7031**

**FEATURES:** All over print with solid side panel detail with front panel liner and drawcord.  
**FABRIC:** 78% Recycled Nylon, 22% Spandex, Eco Friendly Fabric  
**SIZES:** 22-40



**V BACK**

**9615L**

**FEATURES:** All over solid, fully lined suit with performance leg cut. UPF 50+.  
**FABRIC:** 80% Nylon, 20% Spandex  
**COLORS:** 250D Red, 475D Royal, 490D Navy, 790D Black  
**SIZES:** 22-40



**HP BACK**

**7515L**

**FEATURES:** All over solid, fully lined suit with performance leg cut. UPF 50+.  
**FABRIC:** 80% Nylon, 20% Spandex  
**COLORS:** 250D Red, 475D Royal, 490D Navy, 790D Black  
**SIZES:** 22-44



**JAMMER**

**8900L**

**FEATURES:** All over solid, front panel liner with drawcord. UPF 50+.  
**FABRIC:** 80% Nylon, 20% Spandex  
**COLORS:** 250D Red, 475D Royal, 490D Navy, 790D Black  
**WHILE SUPPLIES LAST:** 270D Maroon, 290D Purple, 560D Green  
**SIZES:** 22-40



**RACER**

**7900L**

**FEATURES:** All over solid, fully front lined with drawcord. UPF 50+.  
**FABRIC:** 80% Nylon, 20% Spandex  
**COLORS:** 250D Red, 475D Royal, 490D Navy, 790D Black  
**SIZES:** 24-40



# CUSTOMIZE YOUR TEAM WEAR

Dolphin offers quick turn additional embellishment options on select stock team suits. Make your team suit unique by adding your team name or logo!

**Contact your Sales Rep for more information on our stock with embellishment program.**





# SUBLIMATED SWIMWEAR

Creating your team or swim school look has never been easier! With multiple preset prints and patterns to choose from, your team will stand out on the pool deck. Contact your Dolfin Sales Representative or visit [team.dolfinswimwear.com](http://team.dolfinswimwear.com) to get started today!

**EASY** Self-Service Design Studio & Ordering Process

**LARGE** Assortment of Products with Customization Options

**AMAZING** Quality at Great Prices

**EXCEPTIONAL** Customer Service

*EASY TO USE SITE!*

*REAL-TIME VIEW OF YOUR DESIGN*

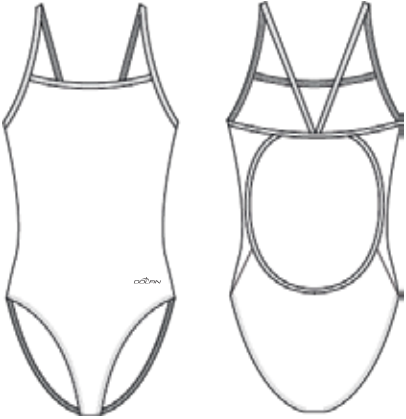
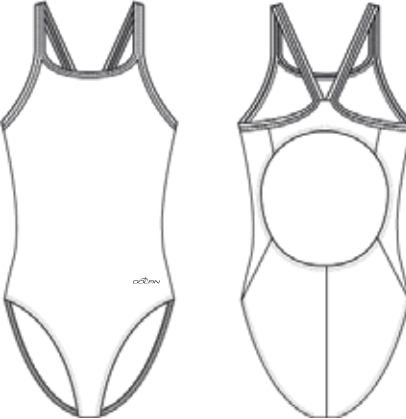
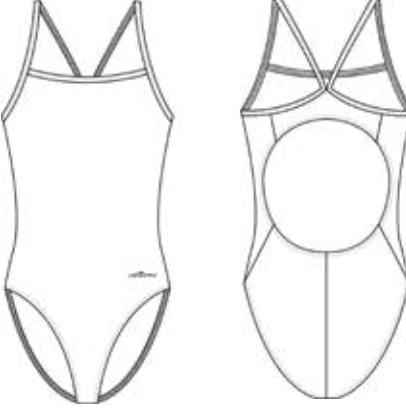
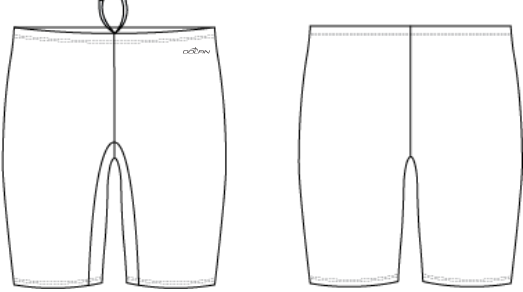
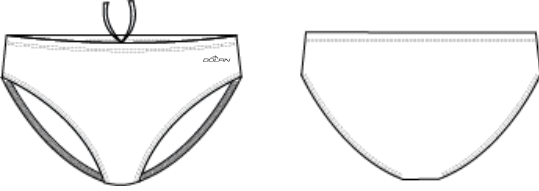
*SAVE, SHARE & PURCHASE YOUR DESIGNS – ALL ONLINE!*







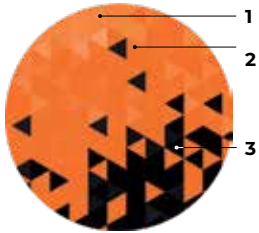
## 1. SELECT YOUR STYLE

|   |                                  |  |                                  |  |                                  |
|---|----------------------------------|--|----------------------------------|--|----------------------------------|
| <b>STRING BACK</b>  | STYLE #: 8SB8000<br>SIZES: 22-40 | <b>DBX BACK</b>  | STYLE #: 8SB8001<br>SIZES: 18-44 | <b>V BACK</b>  | STYLE #: 8SB8002<br>SIZES: 18-44 |
|    |                                  |  |                                  |   |                                  |
| <b>JAMMER</b>   | STYLE #: 8SB8004<br>SIZES: 18-46 |  |                                  | <b>RACER</b>   | STYLE #: 8SB8005<br>SIZES: 22-42 |
|  |                                  |  |                                  |  |                                  |

**FABRIC:** 91% Polyester, 9% Spandex

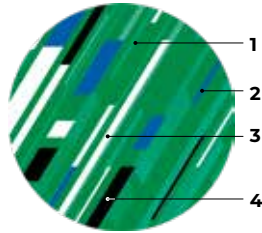
## 2. CHOOSE YOUR PRINT

From 10 unique, preset sublimated prints.



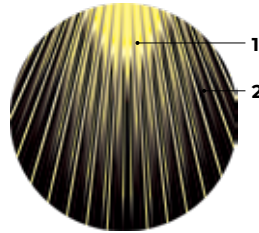
### REFRACTOR

UP TO 3 COLORS  
THREE MAIN  
Color 1. Tangerine  
Color 2. Orange  
Color 3. Black



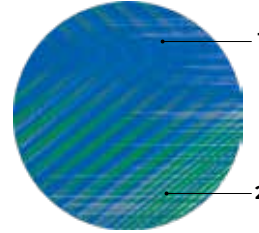
### LUNAR

UP TO 4 COLORS  
ONE MAIN  
Color 1. Kelly  
THREE ACCENT  
Color 2. Royal  
Color 3. White  
Color 4. Black



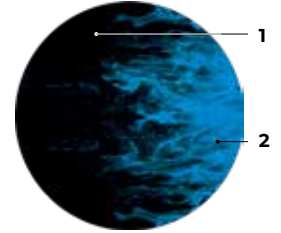
### FLARE

UP TO 2 COLORS  
ONE MAIN  
Color 1. Yellow  
ONE ACCENT  
Color 2. Black



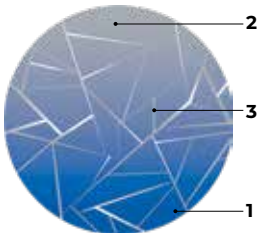
### JOLT

UP TO 2 COLORS  
ONE MAIN  
Color 1. Royal  
ONE ACCENT  
Color 2. Kelly



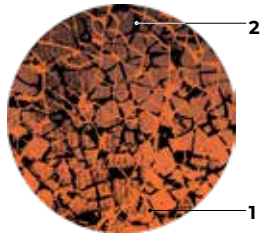
### IGNITE

UP TO 2 COLORS  
TWO MAIN  
Color 1. Black  
Color 2. Electric Blue



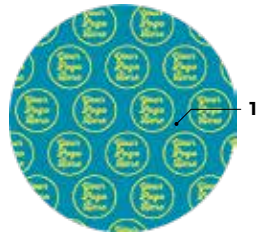
### FRACTURE

UP TO 3 COLORS  
TWO MAIN  
Color 1. Royal  
Color 2. Gray  
ONE ACCENT  
Color 3. White



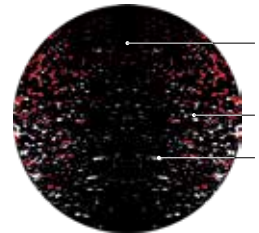
### COLLIDE

UP TO 2 COLORS  
TWO MAIN  
Color 1. Orange  
Color 2. Black



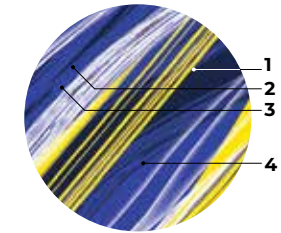
### LOGO REPEAT

UP TO 1 COLOR  
ONE MAIN  
Color 1. Turq (Background)



### BURST

UP TO 3 COLORS  
ONE MAIN  
Color 1. Black  
TWO ACCENT  
Color 2. Red  
Color 3. White



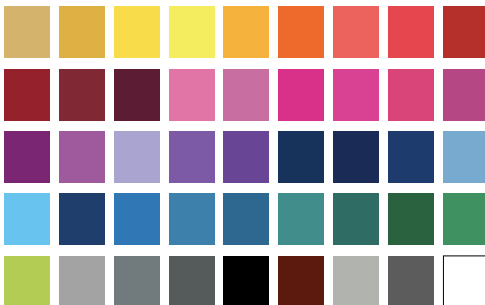
### HAZE

UP TO 4 COLORS  
TWO MAIN  
Color 1. Black  
Color 2. Yellow  
TWO ACCENT  
Color 3. White  
Color 4. Gray

## 3. PICK YOUR COLORS

For your selected print, plus the binding color and liner color.

### Sublimated Colors



### Binding / Strap Colors



### Liner / Tight Colors

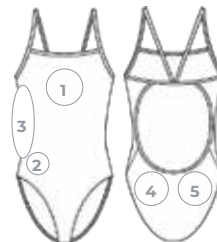


## 4. ADD YOUR TEAM LOGO

To your artwork for no additional charge!

### Women's One Piece

1. Center Chest
2. Front Right Hip
3. Right Side
4. Back Left
5. Back Right



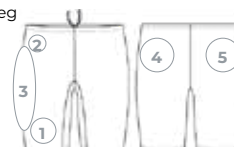
### Men's Racer

1. Front Right Hip
2. Back Left
3. Back Right



### Men's Jammer

1. Front Lower Right Leg
2. Front Right Hip
3. Right Side
4. Back Left
5. Back Right





8SB8002



8SB8004



8SB8005

**REFRACTOR**

- 8SB8002:** V Back, logo shown on center chest.
- 8SB8004:** Jammer, logo shown on front right hip.
- 8SB8005:** Racer, logo shown on front right hip.

AVAILABLE AT [TEAM.DOLFINSWIMWEAR.COM](http://TEAM.DOLFINSWIMWEAR.COM)



8SB8002



8SB8004

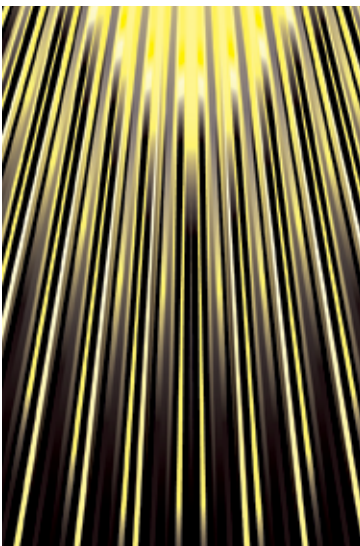


8SB8005

**LUNAR**

- 8SB8002:** V Back, logo shown on back right.
- 8SB8004:** Jammer, logo shown on back right.
- 8SB8005:** Racer, logo shown on back right.

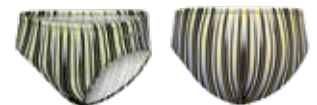
AVAILABLE AT [TEAM.DOLFINSWIMWEAR.COM](http://TEAM.DOLFINSWIMWEAR.COM)



8SB8002



8SB8004

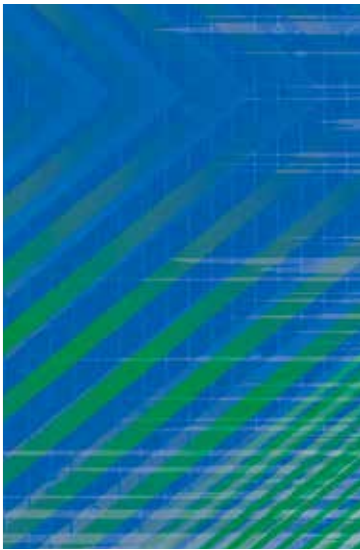


8SB8005

**FLARE**

- 8SB8002:** V Back, logo shown on center chest.
- 8SB8004:** Jammer, logo shown on front right thigh.
- 8SB8005:** Racer, logo shown on front right hip.

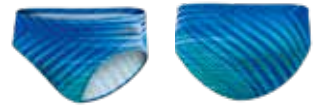
AVAILABLE AT [TEAM.DOLFINSWIMWEAR.COM](http://TEAM.DOLFINSWIMWEAR.COM)



8SB8000



8SB8004



8SB8005

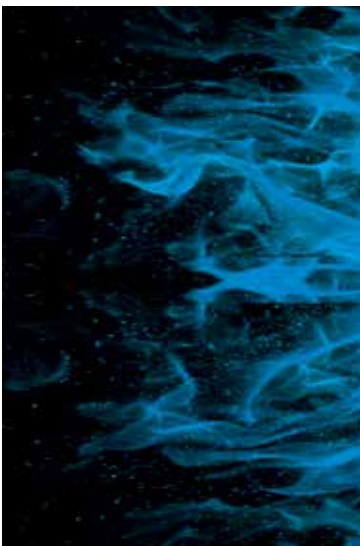
**JOLT**

**8SB8000:** String back, logo shown on front right hip.

**8SB8004:** Jammer, logo shown on front right hip.

**8SB8005:** Racer, logo shown on front right hip.

AVAILABLE AT [TEAM.DOLFINSWIMWEAR.COM](http://TEAM.DOLFINSWIMWEAR.COM)



8SB8001



8SB8004



8SB8005

**IGNITE**

**8SB8001:** DBX back, logo shown on back right.

**8SB8004:** Jammer, logo shown on back right.

**8SB8005:** Racer, logo shown on back right.

AVAILABLE AT [TEAM.DOLFINSWIMWEAR.COM](http://TEAM.DOLFINSWIMWEAR.COM)



8SB8000



8SB8004



8SB8005

**FRACTURE**

**8SB8000:** String back, logo shown on center chest.

**8SB8004:** Jammer, logo shown on back left.

**8SB8005:** Racer, logo shown on back left.

AVAILABLE AT [TEAM.DOLFINSWIMWEAR.COM](http://TEAM.DOLFINSWIMWEAR.COM)



8SB8001



8SB8004



8SB8005

**COLLIDE**

**8SB8001:** DBX back, logo shown on center chest.

**8SB8004:** Jammer, logo shown on back right.

**8SB8005:** Racer, logo shown on back right.

AVAILABLE AT [TEAM.DOLFINSWIMWEAR.COM](http://TEAM.DOLFINSWIMWEAR.COM)



8SB8000



8SB8004



8SB8005

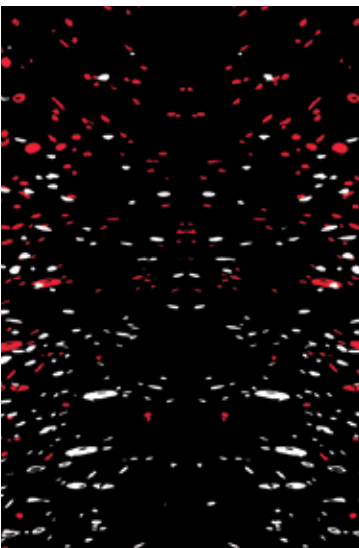
**LOGO REPEAT**

**8SB8000:** String back, logo shown all over.

**8SB8004:** Jammer, logo shown all over.

**8SB8005:** Racer, logo shown all over.

AVAILABLE AT [TEAM.DOLFINSWIMWEAR.COM](http://TEAM.DOLFINSWIMWEAR.COM)



8SB8001



8SB8004



8SB8005

**BURST**

**8SB8001:** DBX back, logo shown on center chest.

**8SB8004:** Jammer, logo shown on front lower right leg.

**8SB8005:** Racer, logo shown on front right hip.

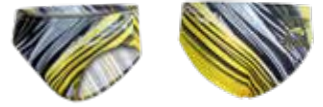
AVAILABLE AT [TEAM.DOLFINSWIMWEAR.COM](http://TEAM.DOLFINSWIMWEAR.COM)



8SB8001



8SB8004



8SB8005

## HAZE

**8SB8001:** DBX back, logo shown on back right.

**8SB8004:** Jammer, logo shown on back right.

**8SB8005:** Racer, logo shown on front right hip.

AVAILABLE AT [TEAM.DOLFINSWIMWEAR.COM](http://TEAM.DOLFINSWIMWEAR.COM)

# TEAM GEAR

Stay warmed up while on deck with Dolfin's line of breathable and lightweight warm-ups and swim parkas. With embroidery options available, your team suits aren't the only way to stand out to the competition!





475D ROYAL



250D RED



490D NAVY



790D BLACK

## SOLID

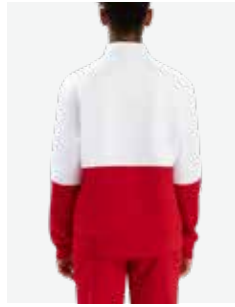
Style No.  
**U317**  
**SLD**

**FEATURES:** Unisex, plush fleece lined parka with pockets, drawcord, and breathable vents with internal mesh lining. Lightweight & water resistant, embellishments available.

**FABRIC:** 100% Polyester

**SIZES:** 2XS-XXL





WA1 RED/WHITE



WB3 ROYAL/WHITE



VX2 NAVY/WHITE

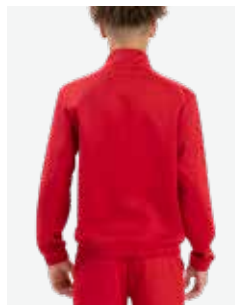


X43 BLACK/WHITE

## COLOR BLOCK JACKET

Style No.  
**WUJ  
03D**

**FEATURES:** Unisex, slim fit color blocked warm-up jacket with full zipper, two hand pockets and two white stripes at sleeve. Lightweight, embellishments available.  
**FABRIC:** 95% Polyester, 5% spandex  
**SIZES:** YXS-YL, AXS-AXXL



152 RED



160 ROYAL



116 NAVY

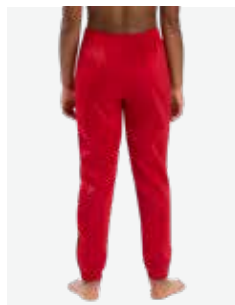


016 BLACK

## SOLID JACKET

Style No.  
**WUJ  
02D**

**FEATURES:** Unisex, slim fit solid warm-up jacket with full zipper, two hand pockets and two white stripes at sleeve. Lightweight, embellishments available.  
**FABRIC:** 95% Polyester, 5% spandex  
**SIZES:** YXS-YL, AXS-AXXL



152 RED



160 ROYAL



116 NAVY



016 BLACK

## PANT

Style No.  
**WUP  
01D**

**FEATURES:** Unisex, slim fit warm-up pants with drawcord at waistband, two hand pockets, and two zippers at leg openings. Lightweight, embellishments available.  
**FABRIC:** 95% Polyester, 5% spandex  
**SIZES:** YXS-YL, AXS-AXXL



# DOLFIN BASICS

## ANYTHING BUT BASIC

Dolphin Basics offers a full collection of solid and color block options for both men and women. With a mix of training and lifestyle suits, basics offers a wide range of products for everyone.



**TIE BACK**

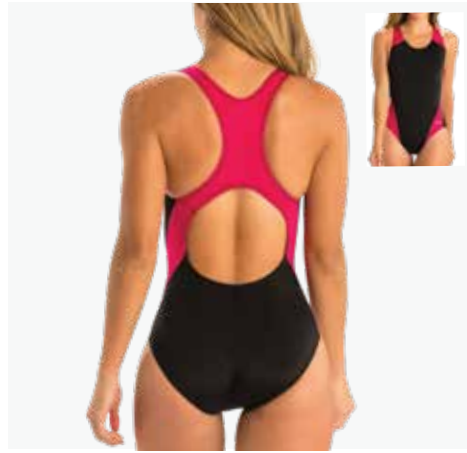
**6F10SLD**

**FEATURES:** All over solid, fully lined suit with performance leg cut. Adjustable string tie back with open back detail. UPF 50+.

**FABRIC:** 91% Polyester, 9% Spandex

**COLORS:** 490D Navy, 790D Black

**SIZES:** 22-40



**PERFORMANCE BACK**

**7707S**

**FEATURES:** Color blocked front lined only suit with performance leg cut. UPF 50+.

**FABRIC:** 91% Polyester, 9% Spandex

**COLORS:** 946D Black/Royal, 947D Black/Green, 949D Black/Red, 950D Black/Purple, 954D Black/Magenta

**SIZES:** 22-40



**PERFORMANCE BACK**

**7482S**

**FEATURES:** Front lined suit with performance leg cut. UPF 50+.

**FABRIC:** 91% Polyester, 9% Spandex

**COLORS:** 250D Red, 475D Royal, 490D Navy, 790D Black

**SIZES:** 22-40



**BIKINI TOP**

**6582C**

**FEATURES:** Fully lined bikini top. Sold Separately. UPF 50+.

**FABRIC:** 100% Polyester

**COLORS:** 250D Red, 475D Royal, 490D Navy, 790D Black

**SIZES:** XS-XL



**TANKINI TOP**

**6584C**

**FEATURES:** Fully lined tankini top with shelf bra. Sold Separately. UPF 50+.

**FABRIC:** 100% Polyester

**COLORS:** 250D Red, 475D Royal, 490D Navy, 790D Black

**SIZES:** XS-XL



**WOMEN'S RASH GUARD 5100SLD**

**FEATURES:** Rash guard with crew neck. Not lined. UPF 50+.

**FABRIC:** 100% Polyester

**COLORS:** 100D White, 250D Red, 475D Royal, 490D Navy

**SIZES:** XS-XXL



**MEN'S RASH GUARD 5200SLD**

**FEATURES:** Rash guard with crew neck. Not lined. UPF 50+.

**FABRIC:** 100% Polyester

**COLORS:** 100D White, 250D Red, 475D Royal, 490D Navy

**SIZES:** XS-XXL





**BIKINI BOTTOM** **6583C**

**FEATURES:** Fully lined bikini bottom. UPF 50+  
**FABRIC:** 100% Polyester  
**COLORS:** 250D Red, 475D Royal, 490D Navy, 790D Black  
**SIZES:** XS-XL



**WOVEN SWIM SHORT** **PSH01**

**FEATURES:** Cover up short in polyester woven fabric with back pocket and waistband. UPF 50+  
**FABRIC:** 100% Polyester  
**COLORS:** 152 Red, 160 Royal, 116 Navy, 016 Black  
**SIZES:** YXS-YL, XS-AXXL



**KNIT SHORT** **61SH**

**FEATURES:** Shorts with elastic waistband.  
**FABRIC:** 55% Cotton, 45% Polyester  
**COLORS:** VA5 Oxford, 016 Black, 068 Gold, 088 Kelly Green, 32C Dark Green, 110 Maroon, 116 Navy, 124 Orange, 140 Pink, 148 Purple, 152 Red, 160 Royal, 180 White  
**SIZES:** YXS-YL, XS-XXL



**RETRO KNIT SHORT** **PSH02**

**FEATURES:** Knit short with contrast white binding and elastic waistband.  
**FABRIC:** 50% Cotton, 50% Polyester  
**COLORS:** 016 Black, 160 Royal, 116 Navy, VA5 Oxford  
**SIZES:** YXS-YL, XS-XXL





**4" YOUTH WATER SHORT 9060Y**

**FEATURES:** Taslon short with mesh brief liner, side pockets, and internal drawcord.  
**FABRIC:** 100% Nylon  
**COLORS:** 250D Red, 475D Royal, 490D Navy, 790D Black  
**SIZES:** YS-YL



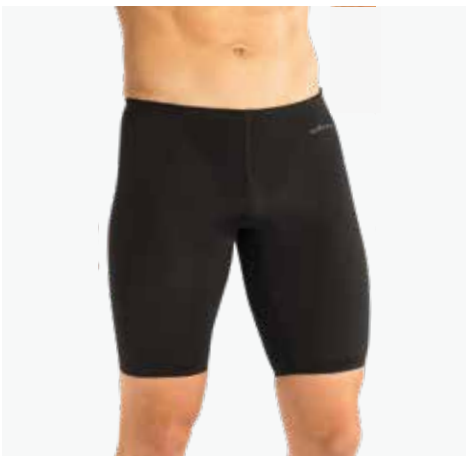
**5" WATER SHORT 9060N**

**FEATURES:** Taslon short with mesh brief liner, side pockets, and internal drawcord.  
**FABRIC:** 100% Nylon  
**COLORS:** 250D Red, 475D Royal, 490D Navy, 790D Black  
**SIZES:** S-XXXL



**9" BOARD SHORT 9780P**

**FEATURES:** Short with mesh brief liner, side pockets, and external drawcord.  
**FABRIC:** 100% Polyester  
**COLORS:** 250D Red, 210D Orange, 475D Royal, 560D Green, 490D Navy, 790D Black  
**SIZES:** S-XXXL



**SOLID JAMMER S8109**

**FEATURES:** Jammer with front panel liner. UPF 50+.  
**FABRIC:** 91% Polyester, 9% Spandex  
**COLORS:** 790D Black  
**SIZES:** 18-40



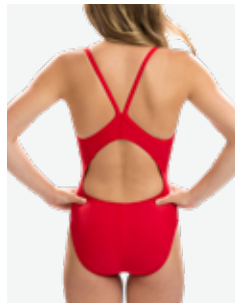
**PANEL JAMMER 8107S**

**FEATURES:** Color block jammer with front panel liner. UPF 50+.  
**FABRIC:** 91% Polyester, 9% Spandex  
**COLORS:** 946D Black/Royal, 949D Black/Red  
**SIZES:** 22-40



## **ON DUTY SUITS**

Lifeguards deserve great suits. With our full collection of Guard branded suits, your pool staff will stand out amongst the visitors, helping to keep your pool safe. Our Guard collection comes in a wide range of male and female suit options, so your staff feels comfortable in what they are wearing on duty.



250D RED



475D ROYAL



490D NAVY

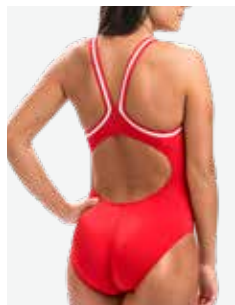


790D BLACK

## V BACK

Style No.  
**9615**  
**LGU**

**FEATURES:** All over solid, fully lined suit with performance leg cut. UPF 50+.  
**FABRIC:** 80% Nylon, 20% Spandex  
**SIZES:** 22-40



250D RED



475D ROYAL



490D NAVY

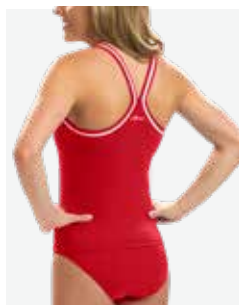


790D BLACK

## DBX BACK

Style No.  
**9582**  
**CGU**

**FEATURES:** All over solid, fully lined suit with performance leg cut. UPF 50+.  
**FABRIC:** 100% Polyester  
**SIZES:** 22-44



250D RED



475D ROYAL



490D NAVY

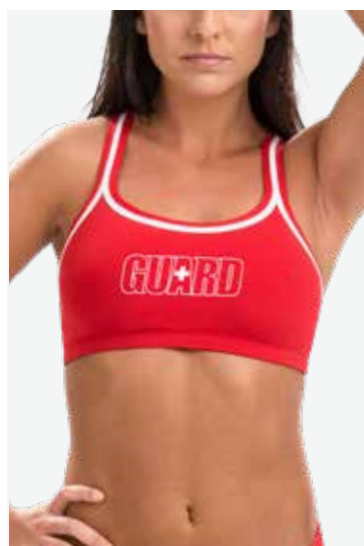


790D BLACK

## TANKINI TOP

Style No.  
**6584**  
**CGU**

**FEATURES:** Fully lined tankini top with shelf bra. Sold Separately. UPF 50+.  
**FABRIC:** 100% Polyester  
**SIZES:** XS-XL



250D RED



475D ROYAL



490D NAVY

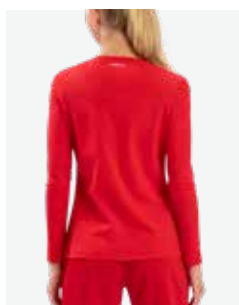


790D BLACK

## BIKINI TOP

Style No.  
**6582**  
**CGU**

**FEATURES:** Fully lined bikini top. Sold Separately. UPF 50+.  
**FABRIC:** 100% Polyester  
**SIZES:** XS-XL



250D RED

## RASH GUARD

Style No.  
**5100**  
**SLDG**

**FEATURES:** Crew neck rash guard. UPF 50+.  
**FABRIC:** 100% Polyester  
**SIZES:** XS-XXL



490D NAVY



250D RED



475D ROYAL

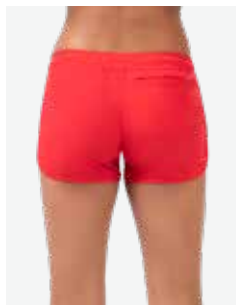


790D BLACK

## BIKINI BOTTOM

Style No.  
**6583C**

**FEATURES:** Fully lined bikini bottom. Guard logo not included, sold separately.  
UPF 50+.  
**FABRIC:** 100% Polyester  
**SIZES:** XS-XL



152 RED



160 ROYAL



116 NAVY



016 BLACK

## WOVEN SHORT

Style No.  
**PSH  
01GU**

**FEATURES:** Cover up short in polyester woven with back pocket and waistband.  
**FABRIC:** 100% Polyester  
**SIZES:** XS-XXL



250D RED

## RASH GUARD

Style No.  
**5200**  
**SLDG**

**FEATURES:** Crew neck rash guard. Not lined. UPF 50+.  
**FABRIC:** 100% Polyester  
**SIZES:** S-XXL



250D RED



475D ROYAL



490D NAVY



790D BLACK

## 9" BOARD SHORT

Style No.  
**9780**  
**PGU**

**FEATURES:** Short with mesh brief liner, side pockets, and external drawcord.  
**FABRIC:** 100% Polyester  
**SIZES:** S-XXL



250D RED



475D ROYAL



490D NAVY



790D BLACK

## 5" WATER SHORT

Style No.  
**9060**  
**NGU**

**FEATURES:** Taslon short with mesh brief liner, side pockets, and internal drawcord.  
**FABRIC:** 100% Nylon  
**SIZES:** S-XXL





## TRAINING SUITS

Uglies, the most popular training suits on the market, is the combination of impeccable fit with fun, colorful and crazy prints. Let your personality shine in the water!



CHLORINE  
RESISTANT



SHAPE  
RETENTION



COLOR  
RETENTION

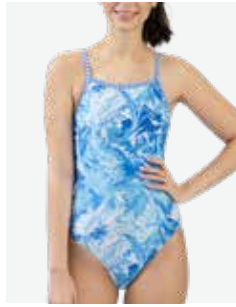


UPF 50%









C18D CRUSH



B25D HYPNOTIZE



C19D ZIG ZAG



B78D DIZZY DOTS



C17D FLY AWAY\*



C16D JUNGLE JAM\*



B46D MIRAGE



256D DOODLE



C32D DELTA

## PRINTED V BACK

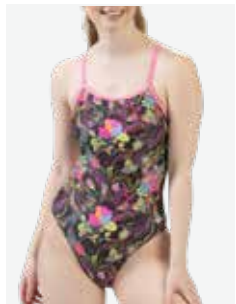
NEW PRINTS

MORE SIZES

Style No.  
**0510**

**FEATURES:** V back straps with open keyhole back detail. Performance leg cut. Signature Uglier Candy Stripe binding, fully lined with coordinating color. UPF 50+.  
**FABRIC:** 91% Polyester, 9% Spandex  
**SIZES:** 22-40

\* Prints also available in Girls' styles



B52D TAPESTRY



C20D BOOKSMART

## PRINTED STRING BACK

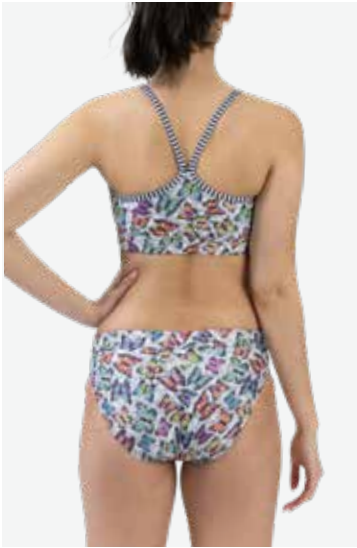
NEW PRINTS

MORE SIZES

Style No.  
**0310**

**FEATURES:** String back strap with open keyhole back detail. Performance leg cut. Signature Uglier Candy Stripe binding, fully lined with coordinating color. UPF 50+.  
**FABRIC:** 91% Polyester, 9% Spandex  
**SIZES:** 22-40





C17D FLY AWAY

## PRINTED V BACK NEW PRINT

Style No.  
**6E10**

**FEATURES:** V-back design featuring internal drawcord in bottoms Sold as set. Performance leg cut. Signature Uglier Candy Stripe binding, fully lined with coordinating color. UPF 50+.

**FABRIC:** 91% Polyester, 9% Spandex

**SIZES:** XS-XL



NEW PRINT

### TWO PIECE

C17D | FLY AWAY



C19D ZIG ZAG



C32D DELTA



C18D CRUSH



C16D JUNGLE JAM

PRINTED JAMMER

NEW PRINTS

Style No.  
**7010**

**FEATURES:** Front panel lined jammer with print and solid mixing. Internal drawcord for added security. UPF 50+.

**FABRIC:** 91% Polyester, 9% Spandex

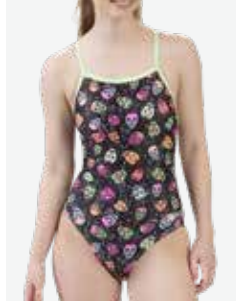
**SIZES:** 22-38

NEW PRINT

JAMMER

B64D | CRUSH





C22D CROSSBONES

## PRINTED V BACK

Style No.  
**0510**

**FEATURES:** V Back straps with open keyhole back detail. Performance leg cut. Signature Uglier Candy Stripe binding, fully lined with coordinating color. UPF 50+.  
**FABRIC:** 91% Polyester, 9% Spandex  
**SIZES:** 22-40

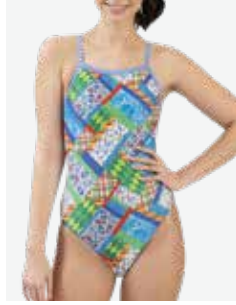


C22D CROSSBONES

## JAMMER

Style No.  
**7010**

**FEATURES:** Front panel lined jammer with all over print. Internal drawcord for added security. UPF 50+.  
**FABRIC:** 91% Polyester, 9% Spandex  
**SIZES:** 22-38



C21D SNOW DAY

## PRINTED V BACK

Style No.  
**0510**

**FEATURES:** V Back straps with open keyhole back detail. Performance leg cut. Signature Uglier Candy Stripe binding, fully lined with coordinating color. UPF 50+.  
**FABRIC:** 91% Polyester, 9% Spandex  
**SIZES:** 22-40



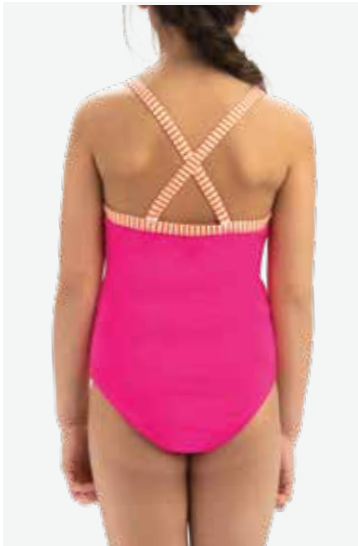
C21D SNOW DAY

## JAMMER

Style No.  
**7010**

**FEATURES:** Front panel lined jammer with all over print. Internal drawcord for added security. UPF 50+.  
**FABRIC:** 91% Polyester, 9% Spandex  
**SIZES:** 22-38

# GIRLS' ONE PIECES



230D PINK



290D PURPLE



480D BLUE



560D LIME

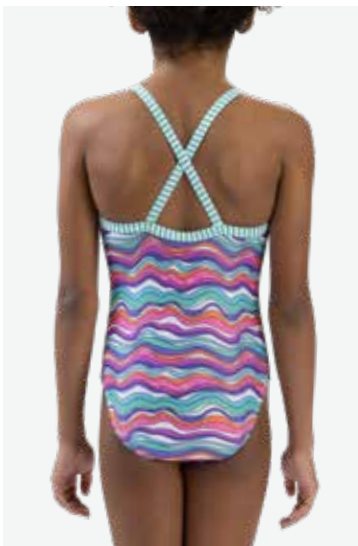


410D TURQ

## SOLID CRISS-CROSS BACK

Style No.  
**9510**  
**SLD**

**FEATURES:** Fully lined suit with bright contrasting color. Signature Uglier Candy Stripe Binding, modest leg cut. UPF 50+.  
**FABRIC:** 91% Polyester, 9% Spandex  
**SIZES:** 8-16



C24D WIGGLE



C16D JUNGLE JAM\*

## PRINTED CRISS-CROSS BACK

Style No.  
**9510U**

**FEATURES:** Fully lined suit with bright contrasting color. Signature Uglier Candy Stripe Binding, modest leg cut. UPF 50+.  
**FABRIC:** 91% Polyester, 9% Spandex  
**SIZES:** 8-16



C17D FLY AWAY\*



C31D POPPIES

## PRINTED KEYHOLE BACK

Style No.  
**9610U**

**FEATURES:** V Back straps with keyhole back detail. Fully lined suit with bright contrasting color. Signature Uglier Candy Stripe Binding, modest leg cut. UPF 50+.  
**FABRIC:** 91% Polyester, 9% Spandex  
**SIZES:** 8-16







## LITTLE SWIMMERS

Our full collection of swimwear includes one-piece suits, , swim trunks, and short sleeve rash guards.



CHLORINE  
RESISTANT



SHAPE  
RETENTION



COLOR  
RETENTION



UPF 50%





**HELLO  
SWIM  
TIME**



C27D ANIMALOONS



C23D HIDE N SEEK

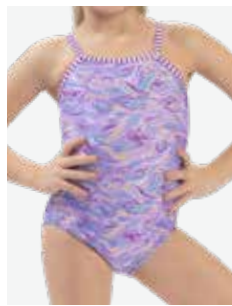
## PRINTED V BACK

Style No.  
**9810**

**FEATURES:** Fully lined suit with bright contrasting color. Signature Uglier Candy Stripe Binding, modest leg cut. Vibrant prints easy to see in the water. UPF 50+.

**FABRIC:** 91% Polyester, 9% Spandex

**SIZES:** 2T-6X



B79D PLAYTIME



C25D KOALA TIME

## PRINTED STRAIGHT BACK

Style No.  
**6D10**

**FEATURES:** Scoop front design with straight back. Fully lined suit with bright contrasting color. Signature Uglier Candy Stripe Binding, modest leg cut. Vibrant prints easy to see in the water. UPF 50+.

**FABRIC:** 91% Polyester, 9% Spandex

**SIZES:** 2T-6X



TURD TURQ



290D PURPLE



480D BLUE



PNKD PINK



LIMD LIME



## SOLID V BACK

LD  
**9504**

**FEATURES:** Fully lined suit with bright contrasting color. Signature Uglier Candy Stripe Binding, modest leg cut. UPF 50+.

**FABRIC:** 91% Polyester, 9% Spandex

**SIZES:** 2T-6X



210D ORANGE



250D RED



475D ROYAL



490D NAVY

## SOLID SWIM TRUNK

Style No.  
**LD225**

**FEATURES:** Solid swim trunk with external front-only drawcord, elastic waistband for comfort, and sewn in mesh brief.

**FABRIC:** 100% Polyester Microfiber

**SIZES:** 2T-4T, 4-7



C29D LEAPIN FROGS



C30D SNAPPY

## PRINTED SWIM TRUNK

NEW STYLE

Style No.  
**9L01**

**FEATURES:** Printed swim trunk with external front-only drawcord, elastic waistband for comfort, and sewn in mesh brief. Vibrant prints easy to see in the water.

**FABRIC:** 100% Polyester

**SIZES:** 2T-4T, 4-7



ORGD ORANGE



LIMD LIME



TURD TURQ



PNKD PINK

---

## SOLID SHORT SLEEVE

Style No.  
**100RG**

**FEATURES:** Unisex, medium-weight fabric rash guard with mock neck for additional coverage. Not lined. UPF 50+

**FABRIC:** 91% Polyester, 9% Spandex

**SIZES:** 2T-7

---



# AQUASHAPE®

## SOLUTION SWIMWEAR

Aquashape offers active fashion styles that suit every woman's body and lifestyle. With built in benefits, Aquashape helps make women feel confident and look their best.

Aquashape suits are created by an all-female team who keep the unique needs of women top priority in all the designs. This collection truly features benefits specific to women of all shapes and sizes.



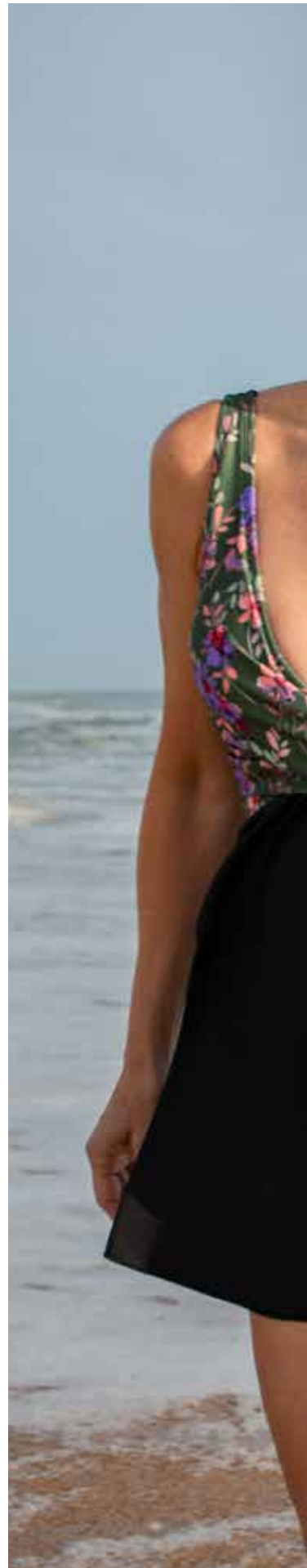
CHLORINE  
RESISTANT



UV  
PROTECTION



SHAPE  
RETENTION







# FEATURES & BENEFITS



## MASTECTOMY FRIENDLY

Easily insert and remove prosthetic cups through a large keyhole on the side of the shelf bra



## BUST ENHANCE

Signature supportive shelf bra and flattering necklines enhance the bust



## TUMMY CONTROL

Power mesh front panel smooths, contours and controls



## HIP & THIGH MINIMIZER

Designed with strategic flattering coverage

**SURPLICE WRAP FRONT  
ONE PIECE**  
Flourish Print



**FULL COVERAGE**

Suits and briefs offer maximum cover. Shorts, skirts, capri and tight options range from mid-thigh to full length.



**CONSERVATIVE COVERAGE**

Suits and briefs sit below the hip line for additional coverage and a more modest fit.



**MODERATE COVERAGE**

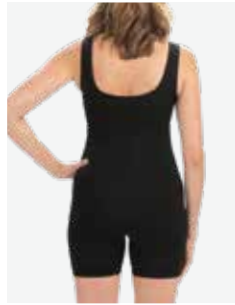
Suits and briefs sit at the hip line creating a long and lean leg shape.



**CONTEMPORARY COVERAGE**

Suits and briefs sit above the hip.





790D BLACK

Hip & Thigh Minimizer 

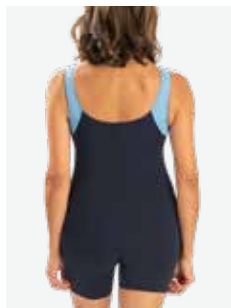
## SCOOP NECK

Style No.  
**60557**

**FEATURES:** Fully lined aquatard with built-in shelf bra, cups not included. UPF 50+.

**FABRIC:** 100% Polyester

**SIZES:** 6-22



832D NAVY/BLUE



968D BLACK/WHITE

Hip & Thigh Minimizer 

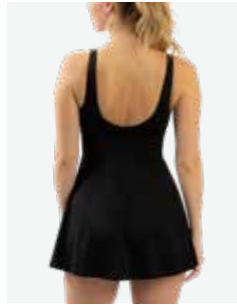
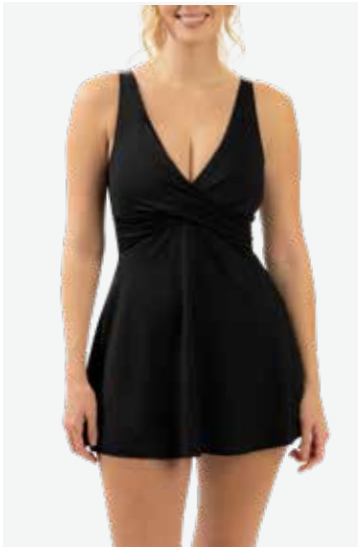
## SCOOP NECK NEW COLORS

Style No.  
**66557**


**FEATURES:** Built-in shelf bra. UPF 50+.

**FABRIC:** 100% Polyester

**SIZES:** 6-22



790D BLACK

Bust Enhance 

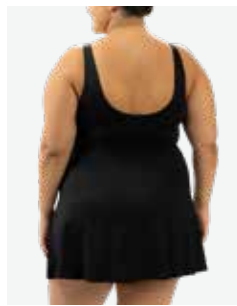
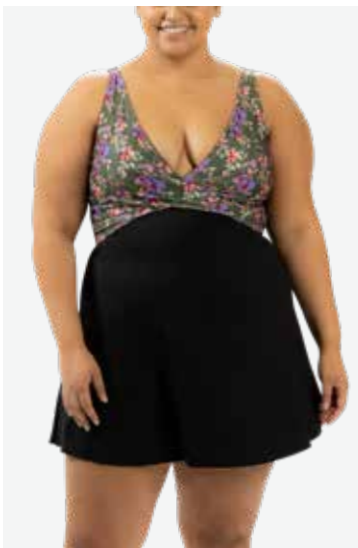
Tummy Control 

Hip & Thigh Minimizer 


## WRAP FRONT NEW COLOR


Style No.  
**3U10**  
**SLD**

**FEATURES:** Fully lined swim dress with removable cups, power mesh front liner, and built-in brief. UPF 50+.  
**FABRIC:** 91% Polyester, 9% Spandex  
**SIZES:** 6-22



B93D FLOURISH

Bust Enhance 

Tummy Control 

Hip & Thigh Minimizer 


## WRAP FRONT NEW PRINT


Style No.  
**3U10**

**FEATURES:** Fully lined swim dress with removable cups, power mesh front liner, and built-in brief. UPF 50+.  
**FABRIC:** 91% Polyester, 9% Spandex  
**SIZES:** 6-26



A93D GLOBETROTTER

Bust Enhance 

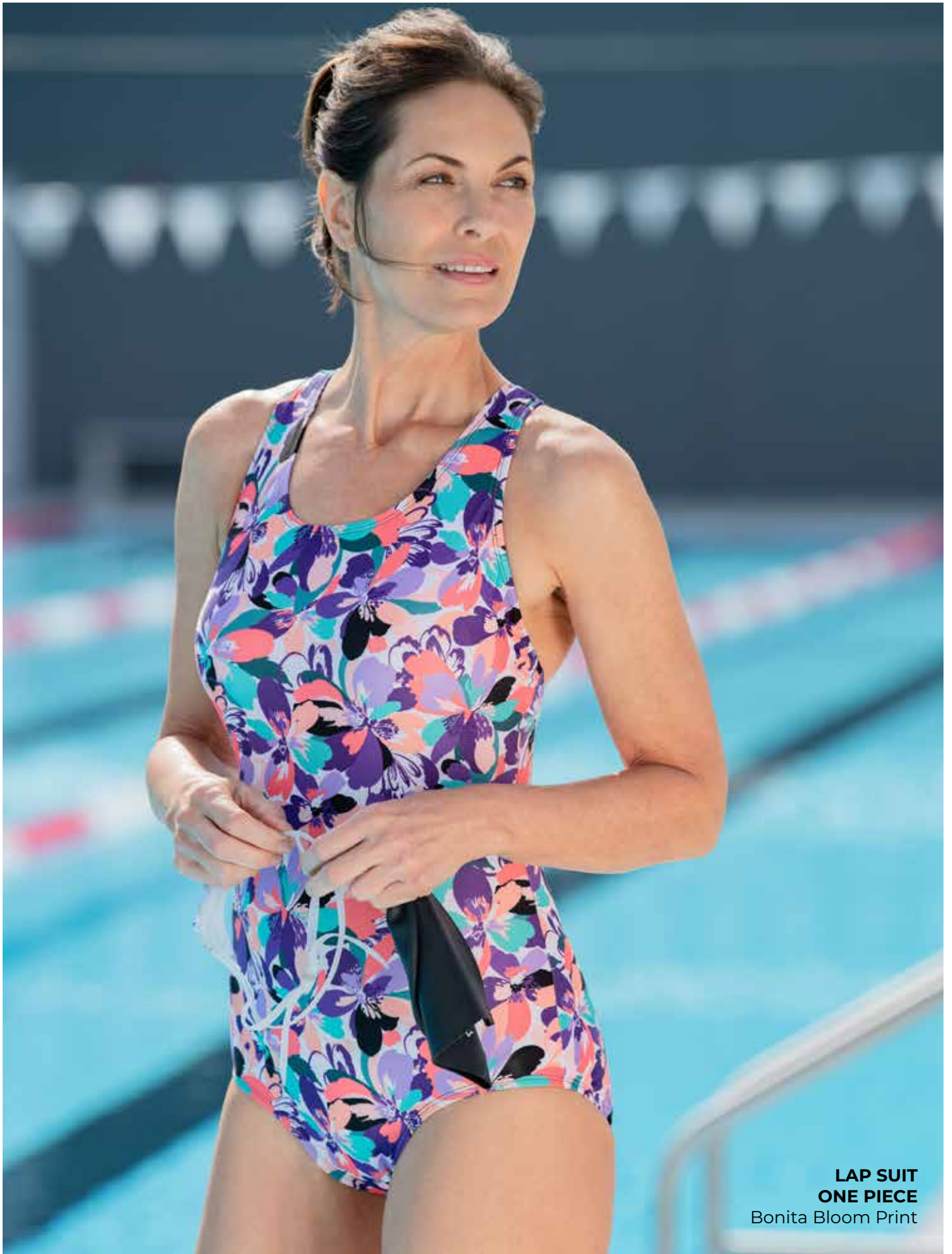
Tummy Control 

Hip & Thigh Minimizer 

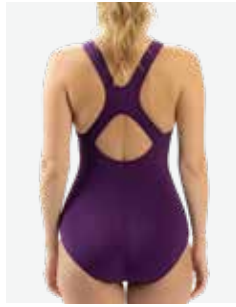
## KNOT FRONT NEW PRINT

Style No.  
**3P10**

**FEATURES:** Full lined swim dress with built-in shelf bra with sewn in cups, a power mesh front liner and built-in brief. UPF 50+.  
**FABRIC:** 91% Polyester, 9% Spandex  
**SIZES:** 6-26



**LAP SUIT**  
**ONE PIECE**  
Bonita Bloom Print



015D EGGPLANT



540D OLIVE




490D NAVY



790D BLACK

Hip & Thigh Minimizer 

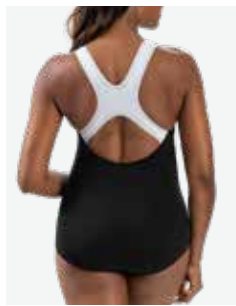
Bust Enhance 

LAP SUIT


NEW COLORS

Style No. **60553**

**FEATURES:** Fully lined, solid lap suit with built-in shelf bra and sewn in cups.  
**UPF:** 50+  
**FABRIC:** 100% Polyester  
**SIZES:** 6-26



968D BLACK/WHITE

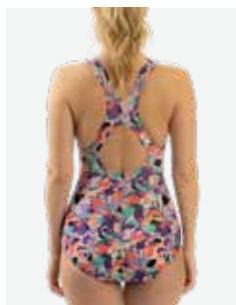
Bust Enhance 

Hip & Thigh Minimizer 


LAP SUIT

Style No. **68553**

**FEATURES:** Fully lined, color block lap suit with built-in shelf bra and sewn in cups.  
**UPF:** 50+  
**FABRIC:** 100% Polyester  
**SIZES:** 6-22



B95D BONITA BLOOM

Bust Enhance 

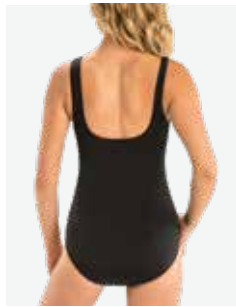
Hip & Thigh Minimizer 

LAP SUIT

NEW PRINT

Style No. **4700**


**FEATURES:** Fully lined, printed lap suit with built-in shelf bra and sewn in cups.  
**UPF:** 50+  
**FABRIC:** 100% Polyester  
**SIZES:** 6-22



790D BLACK



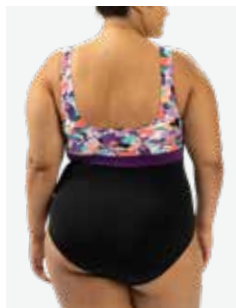
490D NAVY

Bust Enhance 

## SCOOP BACK

Style No.  
**60567**

**FEATURES:** Fully lined solid suit with built-in shelf bra and sewn-in cups. UPF 50+  
**FABRIC:** 100% Polyester  
**SIZES:** 6-22



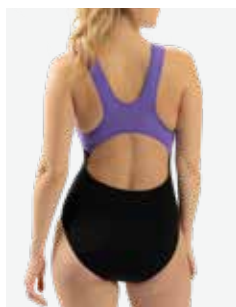
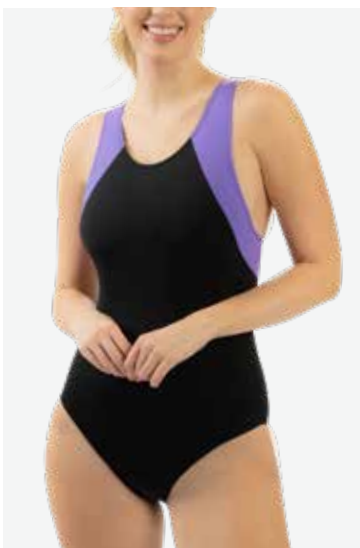
B95D BONITA BLOOM

Bust Enhance 

## SCOOP BACK NEW PRINT

Style No.  
**3F00**

**FEATURES:** Fully lined printed suit with built-in shelf bra and sewn-in cups. UPF 50+  
**FABRIC:** 100% Polyester  
**SIZES:** 6-22



933D BLACK/  
PURPLE



B97D NAVY/OLIVE

## COLOR BLOCK NEW COLORS

Style No.  
**60546**

**FEATURES:** Fully lined suit with built-in shelf bra. UPF 50+  
**FABRIC:** 100% Polyester  
**SIZES:** 6-22





490D NAVY



475D ROYAL



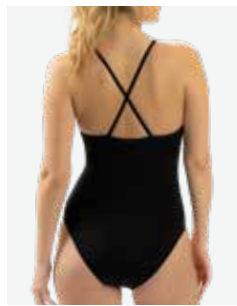
790D BLACK

Bust Enhance 


## STRAIGHT BACK

Style No.  
**3M00**  
**SLD**

**FEATURES:** Fully lined suit with built-in shelf bra and sewn-in cups. UPF 50+  
**FABRIC:** 100% Polyester  
**SIZES:** 6-22



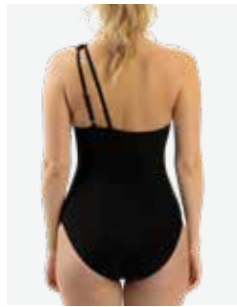
968D BLACK/WHITE

Bust Enhance 


## CRISSCROSS BACK NEW COLOR

Style No.  
**4S00**  
**SLD**

**FEATURES:** Fully lined suit with built-in shelf bra and sewn-in cups. UPF 50+  
**FABRIC:** 100% Polyester  
**SIZES:** 6-22



790D BLACK

Bust Enhance 

Tummy Control 

ASYMMETRICAL RIB KNIT **NEW STYLE**

Style No.  
**4X33  
SLD**


**FEATURES:** Fully lined, solid black ribbed knit one-piece swimsuit with asymmetrical neckline, adjustable and removable straps, sewn-in cups, and tummy ruche panels.

**FABRIC:** 91% Polyester, 9% Spandex

**SIZES:** 6-22



B93D FLOURISH

Bust Enhance 

Tummy Control 

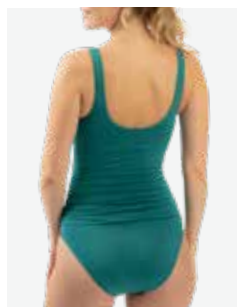
SURPLICE WRAP FRONT **NEW PRINT**

Style No.  
**5U10**


**FEATURES:** Fully lined, printed one-piece swimsuit with new surplice wrap front neck, sewn-in cups, and tummy ruche panels. UPF 50+


**FABRIC:** 91% Polyester, 9% Spandex

**SIZES:** 6-22



063D JADE

Bust Enhance 

Tummy Control 

SURPLICE WRAP FRONT **NEW COLOR**

Style No.  
**5U10  
SLD**

**FEATURES:** Fully lined, solid one-piece swimsuit with surplice wrap front neck, sewn-in cups, and tummy ruche panels. UPF 50+

**FABRIC:** 91% Polyester, 9% Spandex

**SIZES:** 6-22



**SURPLICE WRAP FRONT  
ONE PIECE**  
Flourish Print



790D BLACK



490D NAVY

## ZIP FRONT RASH GUARD

Style No.  
**3K10**  
**SLD**


**FEATURES:** Zip front, solid rash guard with ruched sides and adjustable drawcords.  
Not lined. UPF 50+.  
**FABRIC:** 100% Polyester  
**SIZES:** XS-XXL



490D NAVY



790D BLACK

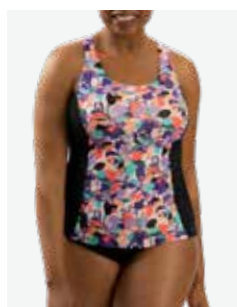
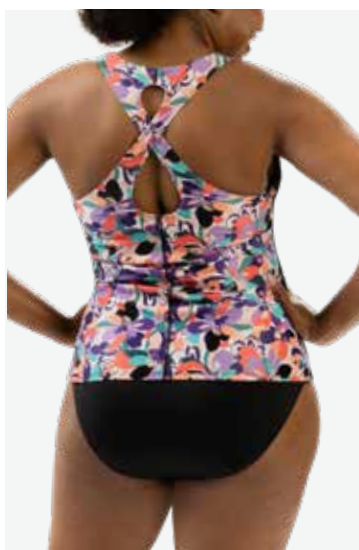
Bust Enhance 

Mastectomy Friendly 

## TWIST BACK TANKINI

Style No.  
**4G00**  
**SLD**

**FEATURES:** Solid twist back with built-in shelf bra with removable cups.  
Not lined. UPF 50+  
**FABRIC:** 100% Polyester  
**SIZES:** XS-XXL



B95D BONITA BLOOM

Bust Enhance 

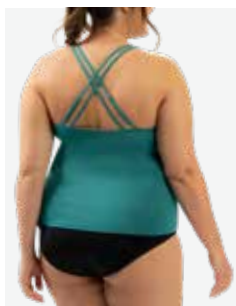
Mastectomy Friendly 

## TWIST BACK TANKINI

NEW PRINT

Style No.  
**4G00**


**FEATURES:** Printed twist back featuring built-in shelf bra with removable cups. Not lined. UPF 50+  
**FABRIC:** 100% Polyester  
**SIZES:** XS-XXL



063D JADE



306D AMETHYST

Bust Enhance 

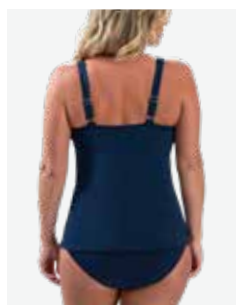
Tummy Control 

## DEEP SCOOP-NECK TANKINI

NEW COLORS

Style No.  
**6J10**  
**SLD**


**FEATURES:** Fully lined, solid deep scoop neck tankini top with removable cups. Featuring adjustable double strap detail, and power mesh. UPF 50+  
**FABRIC:** 91% Polyester, 9% Spandex  
**SIZES:** XS-XXL



490D NAVY



790D BLACK

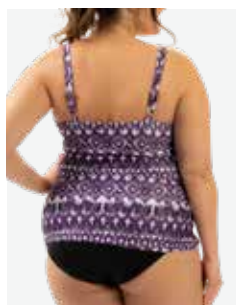
Bust Enhance 

Tummy Control 


## WRAP FRONT TANKINI

Style No.  
**363**  
**WTT**

**FEATURES:** Fully lined, solid top featuring built-in shelf bra with sewn-in cups, power mesh, and adjustable straps. UPF 50+  
**FABRIC:** 91% Polyester, 9% Spandex  
**SIZES:** XS-XXL



A93D GLOBETROTTER

Bust Enhance 

Tummy Control 

## WRAP FRONT TANKINI

NEW PRINT

Style No.  
**6C10**

**FEATURES:** Fully lined, printed top featuring built-in shelf bra with sewn-in cups, power mesh, and adjustable straps.  
**FABRIC:** 91% Polyester, 9% Spandex  
**SIZES:** XS-XXL



**TIERED SKIRT** **5800SLD**

**FEATURES:** High-waisted, fully lined, tiered skirt with elastic waistband. UPF 50+  
**FABRIC:** 100% Polyester  
**COLORS:** 790D Black  
**SIZES:** XS-XXL



**SWIM SKIRT** **3613SK**

**FEATURES:** Mid-rise skirt with built-in brief and elastic waistband. UPF 50+  
**FABRIC:** 100% Polyester  
**COLORS:** 490D Navy, 790D Black  
**SIZES:** XS-XXL



Tummy Control



Hip & Thigh Minimizer



Hip & Thigh Minimizer



**LOOSE FIT SHORT** **6200SLD**

**FEATURES:** Mid-rise short with built-in brief and elastic waistband. UPF 50+  
**FABRIC:** 100% Polyester  
**COLORS:** 490D Navy, 790D Black  
**SIZES:** XS-XXL



**FITTED SHORT** **361SH**

**FEATURES:** Mid-rise fitted short with gusset liner and stay-put legs with elastic waistband. UPF 50+  
**FABRIC:** 100% Polyester  
**COLORS:** 490D Navy, 790D Black  
**SIZES:** XS-XXL



**JAMMER** **361JA**

**FEATURES:** High-rise jammer with gusset liner and stay-put legs with elastic waistband. UPF 50+  
**FABRIC:** 100% Polyester  
**COLORS:** 790D Black  
**SIZES:** XS-XXL



Hip & Thigh Minimizer



Hip & Thigh Minimizer



Hip & Thigh Minimizer



**AQUA TIGHT**

**3610SLD**

**FEATURES:** Mid-rise, full-length tight with flat lock seams and gusset liner. UPF 50+

**FABRIC:** 91% Polyester, 9% Spandex

**COLORS:** 790D Black

**SIZES:** XS-XXL



Hip & Thigh Minimizer



**AQUA CAPRI**

**4J10SLD**

**FEATURES:** Mid-rise, mid-calf length capri with flat lock seams and gusset liner. UPF 50+

**FABRIC:** 91% Polyester, 9% Spandex

**COLORS:** 790D Black

**SIZES:** XS-XXL



Hip & Thigh Minimizer



**HIGH-WAISTED BRIEF 69003**

**FEATURES:** Fully lined, high-rise brief with elastic waistband. UPF 50+  
**FABRIC:** 100% Polyester  
**COLORS:** 490D Navy, 790D Black  
**SIZES:** XS-XXL



**ADJUSTABLE BRIEF 4H00SLD**

**FEATURES:** Fully lined, high-rise brief with ruching and elastic waistband. Adjustable coverage - conservative to moderate. UPF 50+  
**FABRIC:** 100% Polyester  
**COLORS:** 490D Navy, 790D Black  
**SIZES:** XS-XXL

Conservative Coverage ●●●●



Hip & Thigh Minimizer

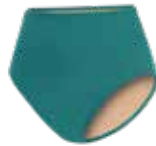
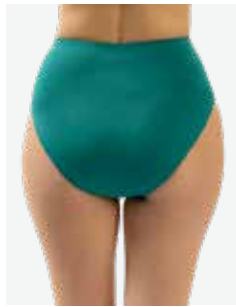


**MODERATE BRIEF 69005**

**FEATURES:** Fully lined, mid-rise brief with elastic waistband. UPF 50+  
**FABRIC:** 100% Polyester  
**COLORS:** 490D Navy, 790D Black  
**SIZES:** XS-XXL

Moderate Coverage ●●●●





063D JADE



306D AMETHYST



490D NAVY



790D BLACK

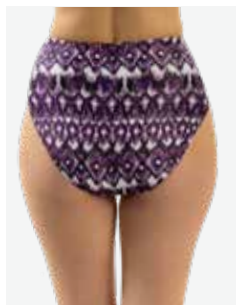
Tummy Control 

**HIGH WAISTED BRIEF**

**NEW COLORS**

Style No.  
**5710**  
**SLD**

**FEATURES:** Fully lined, solid, high-rise brief. UPF 50+  
**FABRIC:** 91% Polyester, 9% Spandex  
**SIZES:** XS-XXL



A93D GLOBETROTTER

Tummy Control 

**HIGH WAISTED BRIEF**

**NEW PRINT**

Style No.  
**5710**

**FEATURES:** Printed, fully lined, high-rise brief. UPF 50+  
**FABRIC:** 91% Polyester, 9% Spandex  
**SIZES:** XS-XXL

# ACCESSORIES

Dolphin Swimwear offers a wide range of training aids and accessories. Whether you are filling your bag for practice, or finding your next favorite goggle, we have it all!



475D ROYAL



790D BLACK



475D ROYAL

## LARGE TEAM BACKPACK

**BP01SLD**

**FEATURES:** 100% Nylon 37 liter backpack featuring two zippered front pockets, two zippered side pockets, internal opening, adjustable straps, comfort back and front clips.

## MESH BAG

**MB51SLD**

**FEATURES:** 100% Polyester / Mesh backpack with front zippered pocket, front adjustable opening, adjustable straps and drawstring enclosure.

NEW STYLE



475D ROYAL

## MEDIUM BACKPACK **BP02SLD**

**FEATURES:** 100% Polyester / Mesh backpack with two compartments, two mesh storage side pockets, adjustable padded straps, with a padded back panel and shoulder straps. Able to be embellished.





BLKD BLACK

**ADULT KICKBOARD 791SA**

**20" x 11.5"**

**FEATURES:** 100% EVA foam kickboard that isolates the legs to build strength.

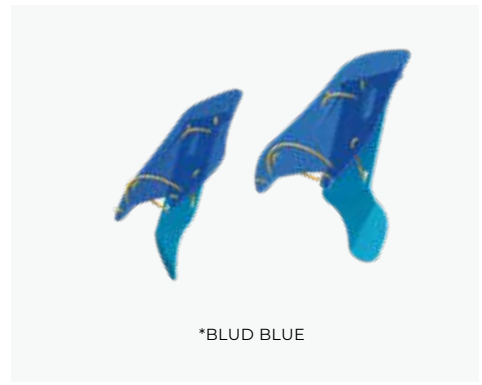


BLUD BLUE

**JUNIOR KICKBOARD 790SA**

**14" x 10"**

**FEATURES:** 100% EVA foam kickboard that isolates the legs to build strength.



\*BLUD BLUE

**FEEDBACK PADDLE 785SA**

**FEATURES:** Encourages perfect strokes by adding resistance.

**\*WHILE SUPPLIES LAST**



944D BLACK

**ADULT PULL BOUY 796SA**

**9" x 3" x 5"**

**FEATURES:** 100% soft EVA foam pull bouy that helps build upper body strength.



536D BLUE

**JUNIOR PULL BOUY 795SA**

**9" x 3" x 4"**

**FEATURES:** 100% soft EVA foam pull bouy that helps build upper body strength.



956D BLACK

**NOSE CLIP 88NC**

**FEATURES:** Soft TPR and Polycarbonate (PC) materials to provide maximum comfort and seal.



920D BLUE

**EAR PLUG 86EP**

**FEATURES:** Soft TPR and PP material that is ergonomically designed for a gentle fit and provides effective protection.



**SWIM FIN**

**FEATURES:** Full foot pocket with long blade. 100% Rubber (not latex free). Color indicates size. (See page 107)



**SOLID LATEX**

**880SA**

**FEATURES:** 100% Latex

**COLORS:** 790D Black

**\*WHILE SUPPLIES LAST:** 210D Orange



**SOLID SILICONE**

**890SA**

**FEATURES:** 100% Silicone, Heavy Weight (30KG)

**COLORS:** 978D Black/Green/Silver, 979D Blue/Purple/Pink

**\*WHILE SUPPLIES LAST:** 480D Light Blue, 700D Silver



RBLD

RPKD

RSID

RPRD

## CHARGER RACING GOGGLE

**616SA**

**FEATURES:** These racing goggles feature a low-profile design, featuring a hypoallergenic silicone gasket, split head strap, 3 interchangeable nose bridges and UVA & UVB protection. These goggles are also anti-fog, FINA approved and available in mirrored and non-mirrored options.

**COLORS:** RBLD Reflex Blue, RPKD Reflex Pink, RSID Reflex Silver, RPRD Reflex Purple



MSID

MWHD

## ASCENDER RACING GOGGLE

**606SA**

**FEATURES:** Low-profile racing design featuring an integrated silicone overmold gasket for low drag, split head strap, 3 interchangeable nose bridges and UVA & UVB protection. These goggles are also anti-fog, FINA approved and available in mirrored options.

**COLORS:** MBKD Mirror Black, MSID Mirror Silver, MWHD Mirror White



BLKD

BLUD

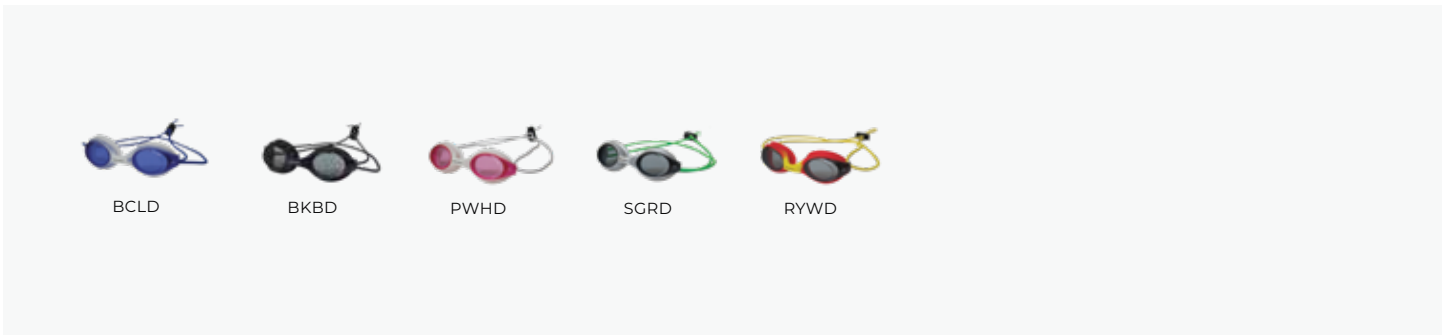
CLRD

## VICTOR RACING GOGGLE

**805SA**

**FEATURES:** These goggles feature a low-profile design, a hypoallergenic silicone gasket, split head strap, 3 interchangeable nose bridges and UVA & UVB protection. These goggles are also anti-fog and available in mirrored and non-mirrored options.

**COLORS:** BLKD Black, BLUD Blue, CLRD Clear



### BUNGEE TRAINING GOGGLE

**13BOGS**

**FEATURES:** Featuring a dual-bungee wrapped strap and quick adjust cord, these training goggles provide a leak-free fit and low profile with a one piece flexible silicone design.

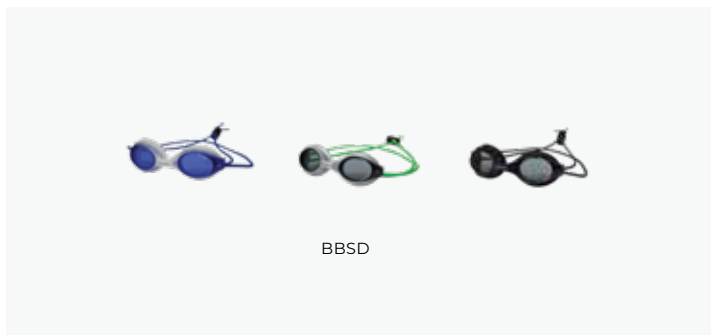
**COLORS:** BCLD Blue/Clear, BKBD Black/Black, PWHD Pink/White, SGRD Silver/Green, RYWD Red/Yellow



### BUNGEE 2 PACK

**13BOGS2**

**COLORS:** BCRD Blue/Clear & Red/Yellow, PCSD Pink/White & Silver/Green



### BUNGEE 3 PACK

**13BOGS3**

**COLORS:** BBSD Blue/Clear, Black/Black, & Silver/Green





## JUNIOR FLIPPER GOGGLE

**856SA**

**FEATURES:** Youth design with an easy, adjustable split head strap featuring anti-fog lenses, a hypoallergenic silicone gasket and UVA & UVB protection.

**COLORS:** BGRD Blue/Green, BYWD Blue/Yellow, OYWD Orange/Yellow, PWHD Pink/White, BLBD Light Blue



## FLIPPER 2 PACK

**856SA2**

**COLORS:** BGOD Blue/Green & Orange/Yellow, PWBD Pink/White & Blue/Light Blue



## FLIPPER 3 PACK

**856SA3**

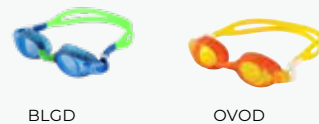
**COLORS:** BBPD Blue/Green, BYWD Blue/Yellow & PWHD Pink/White



## FLIPPER FLOWER GOGGLE

**858SA**

**COLORS:** BBRD Blueberry, STRD Strawberry



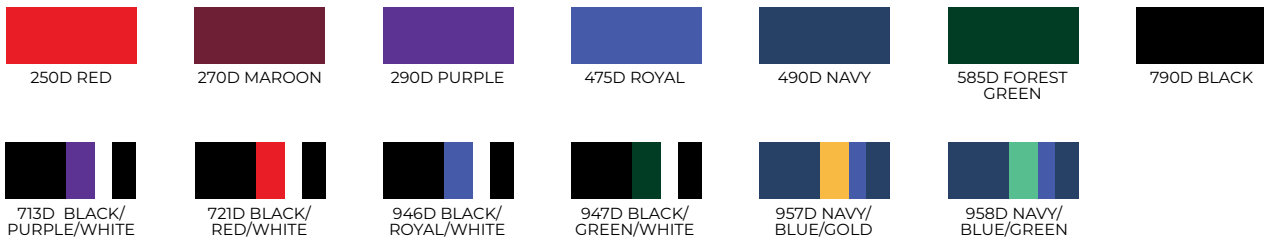
## FLIPPER FIERCE GOGGLE

**86GOFF**

**COLORS:** BLGD Blusaurus Green, OVOD Oviraptor Orange



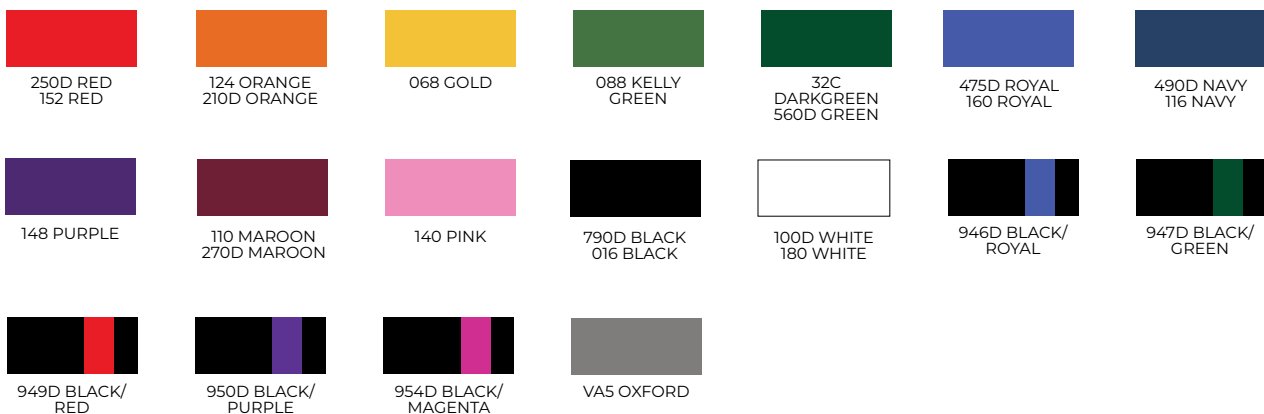
## RELIANCE®



## XTRASLEEK™



## BASICS

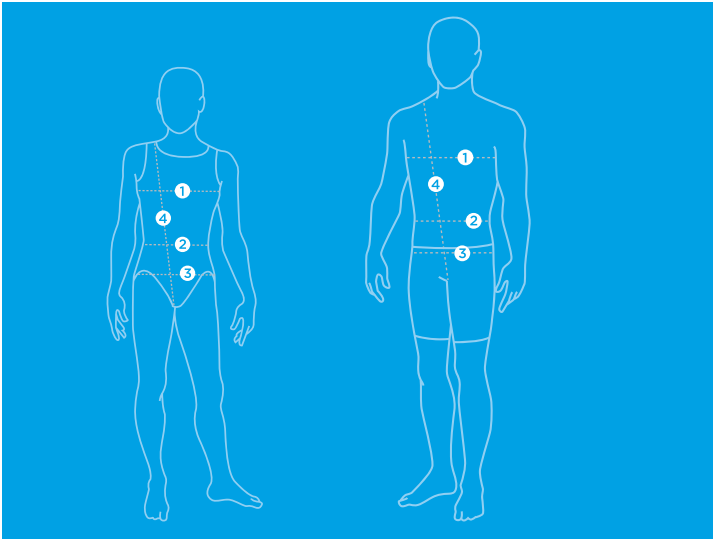


## AQUASHAPE®



## HOW TO MEASURE

\*All measurements recorded in inches



- 1 Chest Measurement:**  
Always measure at the fullest part of the chest with your arms at your side.
- 2 Waist Measurement:**  
Measure around the natural waistline, which is the narrowest part of your waist.
- 3 Hip Measurement:**  
Always measure at the fullest part of the hip standing with your feet together.
- 4 Torso Measurement:**  
Start at the shoulder, down the torso, through the legs, and return back to your starting point.

| MENS TECH SUITS |         |           | FIRSTSTRIKE |
|-----------------|---------|-----------|-------------|
| SIZE            | WAIST   | HIP       |             |
| 18              | 23-24   | 29-30     | 18          |
| 20              | 24-26   | 30-32     | 20          |
| 22              | 26-28   | 32-33.5   | 22          |
| 24              | 28-30   | 33.5-35   | 24          |
| 26              | 30-32   | 35-37     | 26          |
| 28              | 32-34   | 37-39     | 28          |
| 30              | 34-36   | 39-41     | 30          |
| 32              | 36-38.5 | 41-43     | 32          |
| 34              | 38.5-41 | 43-45.5   | 34          |
| 36              | 41-43   | 45.5-47.5 | N/A         |

| WOMEN'S TECH SUITS |           |           |       |       | FIRSTSTRIKE |
|--------------------|-----------|-----------|-------|-------|-------------|
| SIZE               | CHEST     | WAIST     | HIP   | TORSO |             |
| 18                 | 25-26     | 20-21     | 31-32 | 51-53 | 18          |
| 20                 | 26-27     | 21-23     | 32-33 | 53-55 | 20          |
| 22                 | 27-29     | 23-25     | 33-34 | 55-57 | 22          |
| 24                 | 29-31.5   | 25-27.5   | 34-35 | 57-59 | 24          |
| 26                 | 31.5-34.5 | 27.5-29.5 | 35-36 | 59-61 | 26          |
| 28                 | 34.5-37   | 29.5-31   | 36-38 | 61-63 | 28          |
| 30                 | 37-39     | 31-33     | 38-40 | 63-65 | 30          |
| 32                 | 39-40     | 33-34     | 40-41 | 65-67 | 32          |
| 34                 | 40-41     | 34-35     | 41-42 | 67-69 | 34          |
| 36                 | 41-42     | 35-36     | 42-43 | 69-71 | N/A         |

TECH SUIT DISCLAIMER: LIGHTSTRIKE FITS 1 TO 2 SIZES SMALLER THAN YOUR COMPETE SIZE AND PERSONAL PREFERENCE. FIRSTSTRIKE FITS 2 TO 3 SIZES SMALLER THAN YOUR COMPETE SIZE AND PERSONAL PREFERENCE

TECH SUIT DISCLAIMER: LIGHTSTRIKE FITS 1 TO 2 SIZES SMALLER THAN YOUR COMPETE SIZE AND PERSONAL PREFERENCE. FIRSTSTRIKE FITS 2 TO 3 SIZES SMALLER THAN YOUR COMPETE SIZE AND PERSONAL PREFERENCE

| MENS    |       |         |         | RASH GUARDS | SHORTS |
|---------|-------|---------|---------|-------------|--------|
| COMPETE | CHEST | WAIST   | HIP     |             |        |
| 18      | 24    | 20-22   | 24-26   | N/A         | N/A    |
| 20      | 26    | 22-24   | 26-28   | N/A         | N/A    |
| 22      | 28    | 24-25   | 28-30   | N/A         | N/A    |
| 24      | 30    | 25-26   | 30-32   | XS          | S      |
| 26      | 32    | 26-28   | 32-33   | XS          | S      |
| 28      | 34    | 28-30   | 33-35   | S           | M      |
| 30      | 36    | 30-32   | 35-37   | S           | M      |
| 32      | 38    | 32-34   | 37-39   | M           | L      |
| 34      | 40    | 34-36   | 39-41   | M           | L      |
| 36      | 42    | 36-38.5 | 41-43   | L           | XL     |
| 38      | 44    | 38.5-41 | 43-45.5 | L           | XL     |
| 40      | 46    | 41-43   | 45.5-48 | XL          | XXL    |
| 42      | 48    | 43-45   | 48-50   | XL          | XXL    |
| 44      | 50    | 45-47   | 50-52   | XXL         | N/A    |
| 46      | 52    | 47-49   | 52-54   | XXL         | N/A    |

| WOMENS  |       |       |         |       | UGLIES SEPARATES | BASICS |
|---------|-------|-------|---------|-------|------------------|--------|
| COMPETE | CHEST | WAIST | HIP     | TORSO |                  |        |
| 18      | 19-20 | 18-19 | 25-26   | 48    | N/A              | N/A    |
| 20      | 20-22 | 19-20 | 26-27   | 49.5  | N/A              | N/A    |
| 22      | 22-24 | 20-21 | 27-28   | 51    | N/A              | N/A    |
| 24      | 24-26 | 21-22 | 28-29   | 52.5  | N/A              | N/A    |
| 26      | 26-28 | 22-23 | 29-31   | 54    | N/A              | N/A    |
| 28      | 28-30 | 23-24 | 31-33   | 55.5  | N/A              | N/A    |
| 30      | 30-32 | 24-25 | 33-35   | 57    | XS               | XS     |
| 32      | 32-34 | 25-27 | 35-37   | 58.5  | S                | S      |
| 34      | 34-36 | 27-29 | 37-39   | 60    | M                | M      |
| 36      | 36-38 | 29-31 | 39-40.5 | 61.5  | L                | L      |
| 38      | 38-40 | 31-33 | 40.5-42 | 63    | XL               | XL     |
| 40      | 40-42 | 33-35 | 42-44   | 64.5  | N/A              | N/A    |
| 42      | 42-44 | 35-37 | 44-46   | 66    | N/A              | N/A    |
| 44      | 44-46 | 37-39 | 46-48   | 67.5  | N/A              | N/A    |



# SIZE CHART

| YOUTH<br>SIZE | UNISEX |         |     | UGLIES<br>SEPARATES |
|---------------|--------|---------|-----|---------------------|
|               | CHEST  | WAIST   | HIP |                     |
| 2T            | 20     | 19-19.5 | N/A | N/A                 |
| 3T            | 21     | 20-20.5 | N/A | N/A                 |
| 4T            | 22     | 21-21.5 | N/A | N/A                 |
| 4             | 22     | 22      | N/A | N/A                 |
| 5             | 23     | 22.5    | N/A | N/A                 |
| 6             | 24.5   | 23      | N/A | N/A                 |
| 6X/7          | 26     | 23.5    | N/A | N/A                 |
| 8             | 27     | 24      | 28  | YS                  |
| 10            | 28.5   | 25      | 30  | YS                  |
| 12            | 30     | 26      | 32  | YM                  |
| 14            | 31.5   | 28      | 34  | YM                  |
| 16            | 33.5   | 30      | 36  | YL                  |

| UNISEX WARM-UPS |      |       |       |       |
|-----------------|------|-------|-------|-------|
| GROUP           | SIZE | CHEST | WAIST | HIP   |
| YOUTH           | YXS  | 23-25 | 25    | 27.5  |
| YOUTH           | YS   | 26-28 | 26    | 29.5  |
| YOUTH           | YM   | 29-30 | 27    | 31.5  |
| YOUTH           | YL   | 31-33 | 28-30 | 33.5  |
| ADULT           | XS   | 32-34 | 29-30 | 34.5  |
| ADULT           | S    | 34-36 | 30-31 | 35-37 |
| ADULT           | M    | 36-38 | 32-34 | 37-40 |
| ADULT           | L    | 38-41 | 35-37 | 41-43 |
| ADULT           | XL   | 42-44 | 38-40 | 43-45 |
| ADULT           | 2XL  | 46-48 | 40-42 | 46-48 |

Size table above used for styles WUJ02D, WUJ03D, WUP01D only

| WOMENS PRACTICEWEAR<br>(W1977J, PSH01, PSH01GU, PSH02, 1933SH, 61SH) |      |       |       |
|--|------|-------|-------|
| GROUP  | SIZE | CHEST | WAIST |
| YOUTH  | YXS  | 22    | 19    |
| YOUTH  | YS   | 24    | 21    |
| YOUTH  | YM   | 26    | 23    |
| YOUTH  | YL   | 28    | 24    |
| ADULT  | XS   | 32    | 25    |
| ADULT  | S    | 34    | 26    |
| ADULT  | M    | 36    | 28    |
| ADULT  | L    | 38    | 30    |
| ADULT  | XL   | 40    | 33    |
| ADULT  | XXL  | 43    | 36    |

| GK ASC WOMENS WINDBREAKER (F5545) |      |       |       |       |       |
|-----------------------------------|------|-------|-------|-------|-------|
| GROUP                             | SIZE | CHEST | WAIST | HIP   | TORSO |
| CHILD                             | CXS  | 20-22 | 19-21 | 22-24 | 40-42 |
| CHILD                             | CS   | 23-26 | 21-22 | 25-27 | 43-45 |
| CHILD                             | CL   | 26-29 | 22-23 | 28-29 | 46-48 |
| CHILD                             | CL   | 29-31 | 23-25 | 30-31 | 49-51 |
| ADULT                             | AP   | 32-34 | 23-25 | 32-34 | 52-54 |
| ADULT                             | AS   | 33-35 | 25-26 | 33-35 | 55-56 |
| ADULT                             | AM   | 35-36 | 26-27 | 35-36 | 57-59 |
| ADULT                             | AL   | 36-37 | 28-29 | 37-38 | 60-62 |
| ADULT                             | AXL  | 37-39 | 29-30 | 39-40 | 63-65 |
| ADULT                             | A2X  | 39-42 | 30-33 | 40-43 | 65-67 |
| ADULT                             | A3X  | 41-44 | 32-35 | 42-45 | 67-69 |

| UNISEX | PARKA |       |         |
|--------|-------|-------|---------|
| SIZE   | CHEST | WAIST | HIP     |
| XXS    | 23-26 | 19-22 | 24-27   |
| XS     | 26-29 | 22-25 | 27-30   |
| S      | 29-32 | 25-28 | 30-33   |
| M      | 32-36 | 28-32 | 33-37   |
| L      | 36-40 | 32-36 | 37-41   |
| XL     | 40-44 | 36-41 | 41-45.5 |
| XXL    | 44-48 | 41-45 | 45.5-50 |

| WOMENS AQUASHAPE |         |           |       |       |           |
|------------------|---------|-----------|-------|-------|-----------|
| SIZE             | CHEST   | WAIST     | HIP   | TORSO | SEPARATES |
| 2                | 28-29.5 | 23-23.5   | 31-32 | 57    | XS        |
| 4                | 30-31.5 | 24-25     | 33-34 | 58.5  | S         |
| 6                | 32-33   | 25.5-27   | 35-36 | 60    | S         |
| 8                | 34-35.5 | 27.5-29   | 37-38 | 61.5  | M         |
| 10               | 36-37.5 | 29.5-31   | 39-40 | 63    | M         |
| 12               | 38-39.5 | 31.5-32.5 | 41-42 | 64.5  | L         |
| 14               | 40-41.5 | 33-35     | 43-44 | 66    | L         |
| 16               | 42-43.5 | 35-37     | 45-47 | 67.5  | XL        |
| 18               | 44-45.5 | 38-40     | 47-49 | 69    | XL        |
| 20               | 46-48   | 41-42     | 49-50 | 70.5  | XXL       |
| 22               | 48-50   | 43-45     | 51-53 | 72    | XXL       |
| 24               | 50-52   | 45-47     | 53-55 | 73.5  | N/A       |
| 26               | 52-54   | 48-49     | 55-56 | 75    | N/A       |

| UNISEX      | SWIM FIN     |                   |
|-------------|--------------|-------------------|
| SIZE        | STYLE NUMBER | COLOR             |
| 08-11 CHILD | SF91C811     | 560D Lime         |
| 11-01 CHILD | SF91C111     | 290D Purple       |
| 01-03 ADULT | SF910103     | 210D Orange       |
| 03-05 ADULT | SF910305     | 184D Yellow       |
| 05-07 ADULT | SF910507     | 250D Red          |
| 07-09 ADULT | SF910709     | 490D Navy         |
| 09-11 ADULT | SF910911     | 585D Forest Green |
| 11-13 ADULT | SF911113     | 700D Silver       |



**FALL | WINTER 2023  
CATALOG**

**Elite Sportswear**  
2136 N 13th Street  
Reading, PA 19604  
P: 800.441.0818

[dolfinswimwear.com](http://dolfinswimwear.com)